

## ANTI-GLP1R NANOBODY

### Anti GLP1R Nanobody

**Cat. #:** 26206

**Size:** 100 µL

**Gene Symbol:** GLP1R

**Description:** Anti-GLP1R Nanobody

**Background:** GLP-1R (Glucagon-like peptide 1 receptor, glucagon-like peptide-1 receptor) is a class B, G-protein-linked seven-transmembrane domain protein found in the pancreas, lung, heart, kidney, Expressed in the hypothalamus and stomach. It is a receptor for glucagon-like peptide, a regulator of insulin secretion from pancreatic beta cells.

This product is a nanobody with high specificity and affinity for GLP1R. It recognizes the extracellular structural region of GLP1R and can be used in experiments such as GLP1R expression detection and immunoprecipitation. It is a good GLP1R detection tool.

**Clonality:** Recombinant monoclonal Nanobody

**Applications:** Flow cytometry staining, immunostaining and Elisa, IP, Co-IP, IHC

**Dilution:** 1:3000

**Molecular Weight:** 14 kD

**Host Species:** Human, Rat

**Format:** Liquid

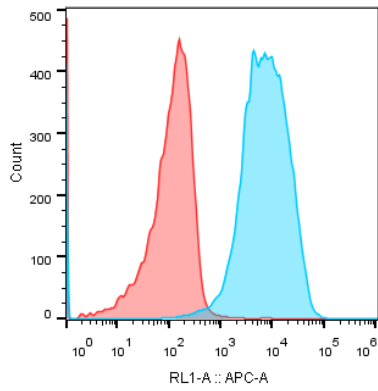
**Constituents:** PBS, 40% Glycerol, 0.03% proclin300

**Species Reactivity:** Human, Mouse

**Storage Conditions:** Store at 4°C, 6 months; -20°C, 2 years

**Tag:**  
His,  
Myc

## FACS $\square$ Anti-GLP1R antibody at 1/3000 dilution :



	Sample Name	Subset Name	Count
<span style="color: cyan;">■</span>	11.27GPL1R+8B3+6D12_ 45-GLP1R+6D12_45_D9.f	Lymphocytes	21968
<span style="color: red;">■</span>	11.27GPL1R+8B3+6D12_ 33mock+6D12_33_C9.fcs	Lymphocytes	21057

11.27GPL1R+8B3+6D12\_ 45-GLP1R+6D12\_45\_D9.fcs  
Lymphocytes  
21968