

GA_q(Q209L)

Gα_q(Q209L)

Cat. #: 26328

Gene Symbol: GNAQ, CMCI, G-ALPHA-q, GAQ, SWS

Description: Anti-GNAQ(Q209L) Mouse Monoclonal Antibody

Background: GNAQ is a protein that in humans encoded by the GNAQ gene. The GNAQ protein, an alpha subunit in the Gq class, couples a seven-transmembrane domain receptor to activation of phospholipase C-beta. Mutations at this locus have been associated with problems in platelet activation and aggregation.

Immunogen: A synthetic peptide from the internal region of GNAQ which includes the mutation of Q209L, human origin.

Applications: ELISA, IF, IHC

Recommended Dilutions:

ELISA: 1:1000-1:2000 WB: 1:500-1:1000 IHC: 1:50-1:100

Concentration: 1 mg/ml

Host Species: Mouse

Format: Liquid

Clonality: Monoclonal

Isotype: IgG

Purity: Purified from ascites

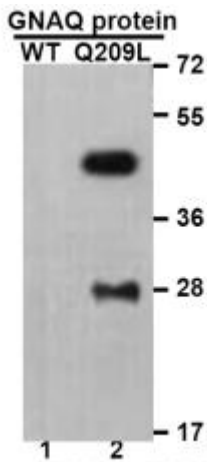
Preservative: No

Constituents: PBS (without Mg²⁺ and Ca²⁺), pH 7.4, 150 mM NaCl, 50% glycerol

Species Reactivity: Recognizes Gα_q(Q209L) mutant, but not wild type Gα_q of vertebrates.

Storage Conditions: Store at -20°C. Avoid repeated freezing and thawing

Immunofluorescence:



WB: anti-GNAQ (Q209L) mAb

Western blot analysis of recombinant GNAQ(Q209L) and wild type proteins. Purified His-tagged GNAQ(Q209L) protein (lane 2) and corresponding wild type protein (lane 1) were blotted with anti-GNAQ(Q209L) monoclonal antibody (Cat. # 26328).