

GP6 (DMC427) IGG1 CHIMERIC MAB**Cat.#:** 28221**Product Name:** Anti-GP6(DMC427) IgG1 Chimeric Monoclonal Antibody**Synonyms:** BDPLT11; GPIV; GPVI**Description:** Anti-GP6 antibody(DMC427) IgG1 Chimeric Monoclonal Antibody**Background:** This gene encodes a platelet membrane glycoprotein of the immunoglobulin superfamily. The encoded protein is a receptor for collagen and plays a critical role in collagen-induced platelet aggregation and thrombus formation. The encoded protein forms a complex with the Fc receptor gamma-chain that initiates the platelet activation signaling cascade upon collagen binding. Mutations in this gene are a cause of platelet-type bleeding disorder-11 (BDPLT11). Alternatively spliced transcript variants encoding multiple isoforms have been observed for this gene.**Applications:** Flow Cyt**Recommended Dilutions:** Flow Cyt 1:100**Host Species:** Rabbit**Isotype:** Rabbit:Human Fc chimeric IgG1**Purification:** Purified from cell culture supernatant by affinity chromatography**Species Reactivity:** Human GP6**Constituents:** Lyophilized from sterile PBS, pH 7.4. 5 % – 8% trehalose is added as protectants before lyophilization.**Storage & Shipping:** Store at -20°C to -80°C for 12 months in lyophilized form. After reconstitution, if not intended for use within a month, aliquot and store at -80°C (Avoid repeated freezing and thawing).

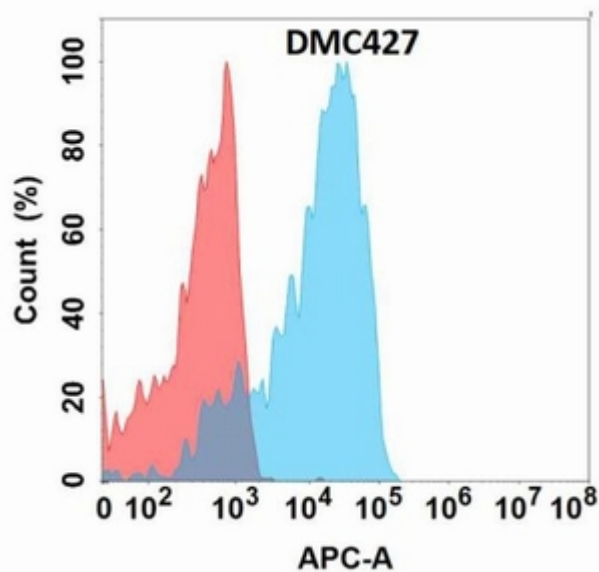


Figure 1. Flow cytometry analysis with Anti-GP6 (DMC427) on Expi293 cells transfected with human GP6 (Blue histogram) or Expi293 transfected with irrelevant protein (Red histogram).