

GPA33 (DMC497) IGG1 CHIMERIC MAB

Cat.#: 28270

Product Name: Anti-GPA33(DMC497) IgG1 Chimeric Monoclonal Antibody

Synonyms: A33

Description: Anti-GPA33 antibody(DMC497) IgG1 Chimeric Monoclonal Antibody

Background: The glycoprotein encoded by this gene is a cell surface antigen that is expressed in greater than 95% of human colon cancers. The open reading frame encodes a 319-amino acid polypeptide having a putative secretory signal sequence and 3 potential glycosylation sites. The predicted mature protein has a 213-amino acid extracellular region; a single transmembrane domain; and a 62-amino acid intracellular tail. The sequence of the extracellular region contains 2 domains characteristic of the CD2 subgroup of the immunoglobulin (Ig) superfamily. [provided by RefSeq; Jul 2008]

Applications: Flow Cyt

Recommended Dilutions: Flow Cyt 1:100

Host Species: Rabbit

Isotype: Rabbit:Human Fc chimeric IgG1

Purification: Purified from cell culture supernatant by affinity chromatography

Species Reactivity: Human GPA33

Constituents: Lyophilized from sterile PBS, pH 7.4. 5 % – 8% trehalose is added as protectants before lyophilization.

Storage & Shipping: Store at -20°C to -80°C for 12 months in lyophilized form. After reconstitution, if not intended for use within a month, aliquot and store at -80°C (Avoid repeated freezing and thawing).

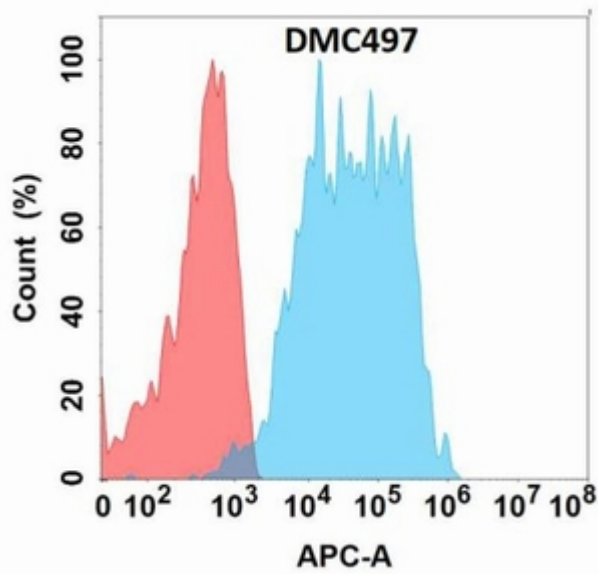


Figure 1. Flow cytometry analysis with Anti-GPA33 (DMC497) on Expi293 cells transfected with human GPA33 (Blue histogram) or Expi293 transfected with irrelevant protein (Red histogram).