

GPR75 (DMC368) IGG1 CHIMERIC MAB

Cat.#: 28201

Product Name: Anti-GPR75(DMC368) IgG1 Chimeric Monoclonal Antibody

Synonyms: Probable G-protein coupled receptor 75

Description: Anti-GPR75 antibody(DMC368) IgG1 Chimeric Monoclonal Antibody

Background: GPR75 is a member of the G protein-coupled receptor family. GPRs are cell surface receptors that activate guanine-nucleotide binding proteins upon the binding of a ligand.

Applications: Flow Cyt

Recommended Dilutions: Flow Cyt 1:100

Host Species: Rabbit

Isotype: Rabbit:Human Fc chimeric IgG1

Purification: Purified from cell culture supernatant by affinity chromatography

Species Reactivity: Human GPR75

Constituents: Lyophilized from sterile PBS, pH 7.4. 5 % – 8% trehalose is added as protectants before lyophilization.

Storage & Shipping: Store at -20°C to -80°C for 12 months in lyophilized form. After reconstitution, if not intended for use within a month, aliquot and store at -80°C (Avoid repeated freezing and thawing).

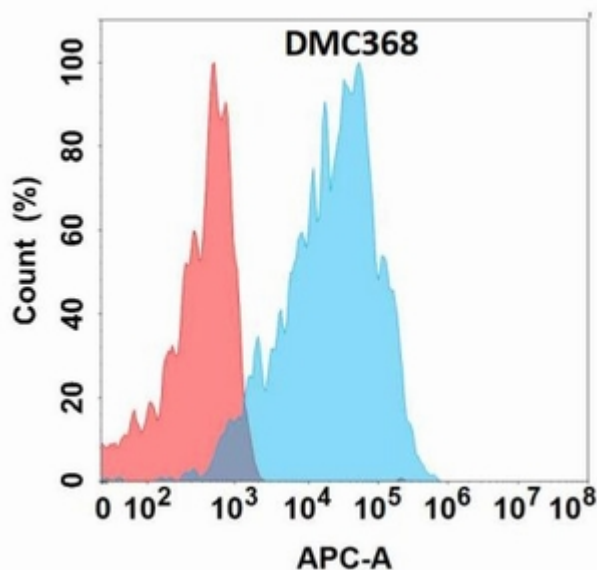


Figure 1. Flow cytometry analysis with Anti-GPR75 (DMC368) on Expi293 cells transfected with human GPR75 (Blue histogram) or Expi293 transfected with irrelevant protein (Red histogram)

