

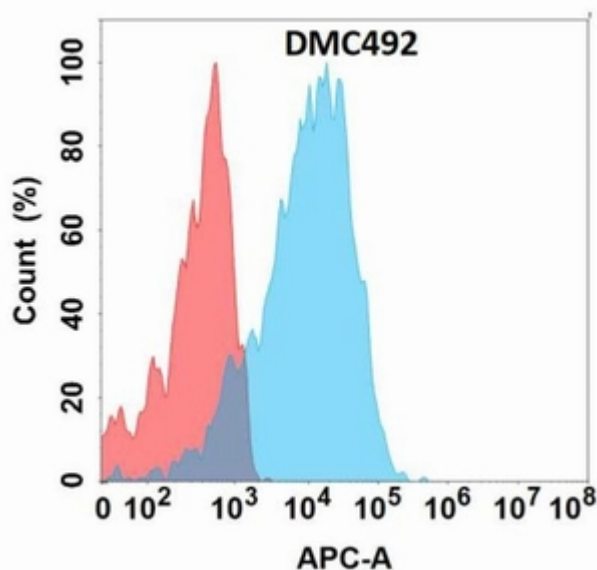
GPR75 (DMC492) IGG1 CHIMERIC MAB**Cat.#:** 28265**Product Name:** Anti-GPR75(DMC492) IgG1 Chimeric Monoclonal Antibody**Synonyms:** Probable G-protein coupled receptor 75**Description:** Anti-GPR75 antibody(DMC492) IgG1 Chimeric Monoclonal Antibody**Background:** GPR75 is a member of the G protein-coupled receptor family. GPRs are cell surface receptors that activate guanine-nucleotide binding proteins upon the binding of a ligand.[supplied by OMIM; Jul 2002]**Applications:** Flow Cyt**Recommended Dilutions:** Flow Cyt 1:100**Host Species:** Rabbit**Isotype:** Rabbit:Human Fc chimeric IgG1**Purification:** Purified from cell culture supernatant by affinity chromatography**Species Reactivity:** Human GPR75**Constituents:** Lyophilized from sterile PBS, pH 7.4. 5 % – 8% trehalose is added as protectants before lyophilization.**Storage & Shipping:** Store at -20°C to -80°C for 12 months in lyophilized form. After reconstitution, if not intended for use within a month, aliquot and store at -80°C (Avoid repeated freezing and thawing).

Figure 1. Flow cytometry analysis with Anti-GPR75 (DMC492) on Expi293 cells transfected with human GPR75 (Blue histogram) or Expi293 transfected with irrelevant protein (Red histogram)

