

**GPR77 (DMC482) IGG1 CHIMERIC MAB****Cat.#:** 28258**Product Name:** Anti-GPR77(DMC482) IgG1 Chimeric Monoclonal Antibody**Synonyms:** C5L2; GPF77; GPR77**Description:** Anti-GPR77 antibody(DMC482) IgG1 Chimeric Monoclonal Antibody**Background:** This gene encodes a G-protein coupled receptor 1 family member involved in the complement system of the innate immune response. Unlike classical G-protein coupled receptors; the encoded protein does not associate with intracellular G-proteins. It may instead modulate signal transduction through the beta-arrestin pathway; and may alternatively act as a decoy receptor. This gene may be involved in coronary artery disease and in the pathogenesis of sepsis. Alternative splicing results in multiple transcript variants. [provided by RefSeq; Nov 2012]**Applications:** Flow Cyt**Recommended Dilutions:** Flow Cyt 1:100**Host Species:** Rabbit**Isotype:** Rabbit:Human Fc chimeric IgG1**Purification:** Purified from cell culture supernatant by affinity chromatography**Species Reactivity:** Human GPR77**Constituents:** Lyophilized from sterile PBS, pH 7.4. 5 % – 8% trehalose is added as protectants before lyophilization.**Storage & Shipping:** Store at -20°C to -80°C for 12 months in lyophilized form. After reconstitution, if not intended for use within a month, aliquot and store at -80°C (Avoid repeated freezing and thawing).

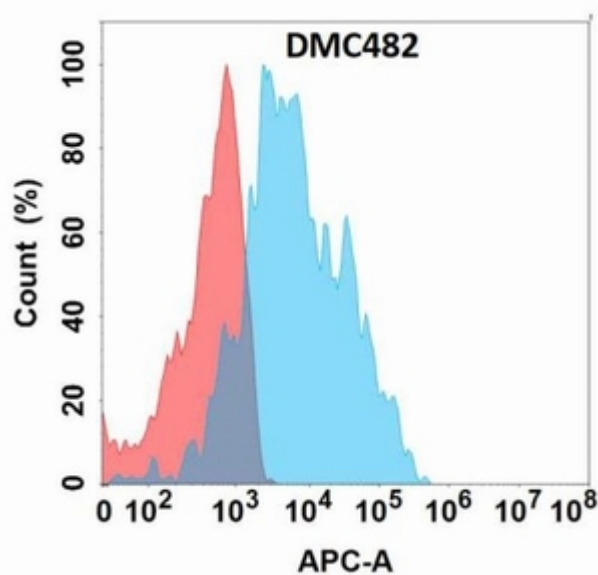


Figure 1. Flow cytometry analysis with Anti-GPR77 (DMC482) on Expi293 cells transfected with human GPR77 (Blue histogram) or Expi293 transfected with irrelevant protein (Red histogram).