

**GRB7 PAB****GRB7 Polyclonal Antibody****Cat. #:** 21218**Gene Symbol:** GRB7**Description:** Anti-GRB7 Rabbit Polyclonal Antibody

**Background:** Grb7 is an adaptor protein that interacts with epidermal growth factor receptor (EGFR) and ephrin receptors. It plays a role in the integrin signaling pathway and cell migration by binding with focal adhesion kinase (FAK). Grb7 gene is commonly co-amplified (present in excess copies) in breast cancers. Grb7 is over-expressed in testicular germ cell tumors, esophageal cancers, and gastric cancers. There are clues that it involved in cell migration and metastatic progression of human esophageal carcinomas.

**Immunogen:** A synthetic peptide from the C-terminus of GRB7 protein, human origin.

**Applications:** ELISA, WB, IHC

**Recommended Dilutions:**

ELISA: 1:1000–1:5000

WB: 1:250–1:1000

IHC: 1:50–1:100

**Concentration:** 0.5 mg/ml

**Host Species:** Rabbit

**Format:** Liquid

**Clonality:** Polyclonal

**Isotype:** IgG

**Purity:** Purified from serum

**Preservative:** No

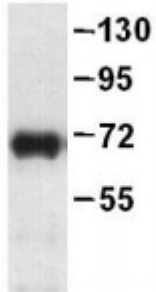
**Constituents:** PBS (without  $Mg^{2+}$  and  $Ca^{2+}$ ), pH 7.4, 150 mM NaCl, 50% glycerol

**Species Reactivity:** Anti-GRB7 rabbit polyclonal antibody recognizes GRB7 from vertebrates.

**Storage Conditions:** Store at  $-20^{\circ}C$ . Avoid repeated freezing and thawing.

## Western blot:

GRB7 protein



WB: Anti-GRB7 pAb

Western blot analysis of GRB7 proteins. Whole-cell lysate of MEF cells was blotted with Anti-GRB7 polyclonal antibody (Cat. #26071).