

GUCY2C (DMC387) IGG1 CHIMERIC MAB

Cat.#: 28205

Product Name: Anti-GUCY2C(DMC387) IgG1 Chimeric Monoclonal Antibody

Synonyms: DIAR6; GC-C; GUC2C; MECIL; MUCIL; STAR

Description: Anti-GUCY2C antibody(DMC387) IgG1 Chimeric Monoclonal Antibody

Background: This gene encodes a transmembrane protein that functions as a receptor for endogenous peptides guanylin and uroguanylin; and the heat-stable E. coli enterotoxin. The encoded protein activates the cystic fibrosis transmembrane conductance regulator. Mutations in this gene are associated with familial diarrhea (autosomal dominant) and meconium ileus (autosomal recessive).

Applications: Flow Cyt

Recommended Dilutions: Flow Cyt 1:100

Host Species: Rabbit

Isotype: Rabbit:Human Fc chimeric IgG1

Purification: Purified from cell culture supernatant by affinity chromatography

Species Reactivity: Human GUCY2C

Constituents: Lyophilized from sterile PBS, pH 7.4. 5 % – 8% trehalose is added as protectants before lyophilization.

Storage & Shipping: Store at -20°C to -80°C for 12 months in lyophilized form. After reconstitution, if not intended for use within a month, aliquot and store at -80°C (Avoid repeated freezing and thawing).

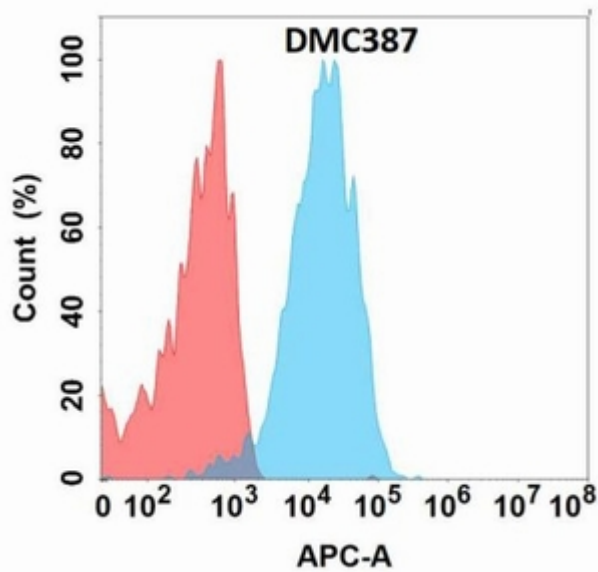


Figure 1. Flow cytometry analysis with Anti-GUCY2C (DMC387) on Expi293 cells transfected with human GUCY2C (Blue histogram) or Expi293 transfected with irrelevant protein (Red histogram).