

HER2 (DMC369) IGG1 CHIMERIC MAB

Cat.#: 28202

Product Name: Anti-HER2(DMC369) IgG1 Chimeric Monoclonal Antibody

Synonyms: ERBB2;CD340;HER-2;neu;HER2;MLN19;NEU;NGL;TKR1

Description: Anti-HER2 antibody(DMC369) IgG1 Chimeric Monoclonal Antibody

Background: This gene encodes a member of the epidermal growth factor (EGF) receptor family of receptor tyrosine kinases. This protein has no ligand binding domain of its own and therefore cannot bind growth factors. However; it does bind tightly to other ligand-bound EGF receptor family members to form a heterodimer; stabilizing ligand binding and enhancing kinase-mediated activation of downstream signalling pathways; such as those involving mitogen-activated protein kinase and phosphatidylinositol-3 kinase. Allelic variations at amino acid positions 654 and 655 of isoform a (positions 624 and 625 of isoform b) have been reported; with the most common allele; Ile654:Ile655; shown here. Amplification and/or overexpression of this gene has been reported in numerous cancers; including breast and ovarian tumors. Alternative splicing results in several additional transcript variants; some encoding different isoforms and others that have not been fully characterized.

Applications: Flow Cyt

Recommended Dilutions: Flow Cyt 1:100

Host Species: Rabbit

Isotype: Rabbit:Human Fc chimeric IgG1

Purification: Purified from cell culture supernatant by affinity chromatography

Species Reactivity: Human Her2

Constituents: Lyophilized from sterile PBS, pH 7.4. 5 % – 8% trehalose is added as protectants before lyophilization.

Storage & Shipping: Store at -20°C to -80°C for 12 months in lyophilized form. After reconstitution, if not intended for use within a month, aliquot and store at -80°C (Avoid repeated freezing and thawing).

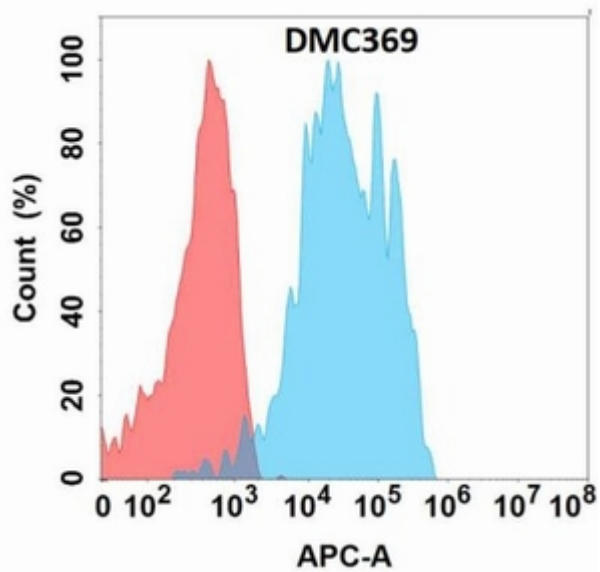


Figure 1. Flow cytometry analysis with Anti-HER2 (DMC369) on Expi293 cells transfected with human HER2 (Blue histogram) or Expi293 transfected with irrelevant protein (Red histogram).