

ANTI-HPV16 NANOBODY

Anti-HPV16 Nanobody

Cat. #: 26301

Size: 100 μ L

Gene Symbol: HPV 16 L1

Description: Anti-HPV16 Nanobody

Background: The major capsid protein of human papillomavirus type 16 (HPV16 L1) is a key structural component of viral particles and is of great significance for studying the infection mechanism, diagnosis and vaccine development of HPV16. In the fields of molecular biology, immunology and related disease research, the identification and detection of HPV16 L1 is extremely critical. Anti-HPV16 nanobody is a recombinant single domain antibody against HPV16 L1. It has high specificity and affinity and can efficiently recognize and isolate HPV16 L1 protein. It is of great significance in the detection of HPV16 and related research.

Immunogen: Recombinant monoclonal Nanobody

Applications: Flow cytometry staining, immunostaining and Elisa, IP, Co-IP, IHC

Dilution: 1:1000

Molecular Weight: 15kD

Host Species: Human

Format: Liquid

Clonality: Monoclonal

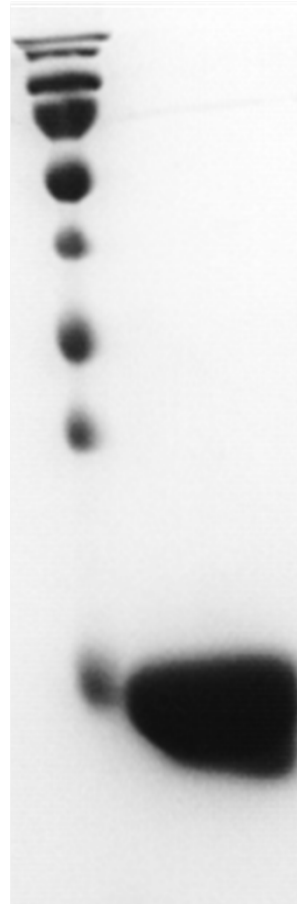
Tag: His, Myc

Constituents: PBS, 40% Glycerol, 0.03% proclin300

Species Reactivity: Human

Storage Conditions: Store at 4 \times , 6 months; -20 \times , 2 years

M NB



15KD

ELISA Anti-HPV16 L1 nanobody: