

## HUMAN ACE2 PROTEIN, HIS TAG

**Cat.#:** 11296

**Product Name:** Human ACE2 Protein

**Size:** 10 µg, 50 µg and 100 µg

**Synonyms:** ACE-2;CEH;CE2

**Target:** ACE2

**UNIPROT ID:** Q9BYF1

**Description:** Recombinant Human ACE2 Protein with N-terminal 6xHis tag

**Background:** The protein encoded by this gene belongs to the angiotensin-converting enzyme family of dipeptidyl carboxydipeptidases and has considerable homology to human angiotensin 1 converting enzyme. This secreted protein catalyzes the cleavage of angiotensin I into angiotensin 1-9, and angiotensin II into the vasodilator angiotensin 1-7. The organ- and cell-specific expression of this gene suggests that it may play a role in the regulation of cardiovascular and renal function, as well as fertility. In addition, the encoded protein is a functional receptor for the spike glycoprotein of the human coronaviruses SARS and HCoV-NL63.

**Species/Host:** HEK293

**Molecular Weight:** The protein has a predicted molecular mass of 84.4 kDa after removal of the signal peptide. The apparent molecular mass of His-ACE2 is approximately 100-130 kDa due to glycosylation.

**Molecular Characterization:** 6xHis ACE2(Gln18-Ser740)

**Purity:** The purity of the protein is greater than 95% as determined by SDS-PAGE and Coomassie blue staining.

**Formulation & Reconstitution:** Lyophilized from nanodisc solubilization buffer (20 mM Tris-HCl, 150 mM NaCl, pH 8.0). Normally 5% – 8% trehalose is added as protectants before lyophilization.

**Storage & Shipping:** Store at -20°C to -80°C for 12 months in lyophilized form. After reconstitution, if not intended for use within a month, aliquot and store at -80°C (Avoid repeated freezing and thawing). Lyophilized proteins are shipped at ambient temperature.

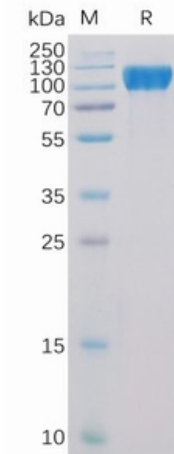


Figure 1. Human ACE2 Protein, His Tag on SDS-PAGE under reducing condition.

## Human ACE2, His Tagged protein ELISA

0.2 µg of ACE2, His Tagged protein per well

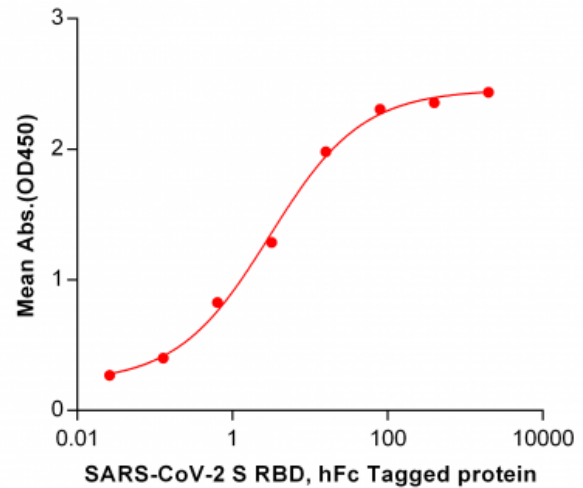


Figure 2. ELISA plate pre-coated by 2 µg/ml (100 µl/well) Human ACE2, His Tagged protein can bind S-RBD, hFc tagged protein 11295 in a linear range of 0.128-80.0 ng/ml.