

## HUMAN ADGRE1 PROTEIN, HIS TAG

**Cat.#:** 11418

**Product Name:** Human ADGRE1 Protein

**Size:** 10 µg, 50 µg and 100 µg

**Synonyms:** EMR1;TM7LN3

**Target:** ADGRE1

**UNIPROT ID:** Q14246

**Description:** Recombinant human ADGRE1 protein with C-terminal 6xHis tag

**Background:** This gene encodes a protein that has a domain resembling seven transmembrane G protein-coupled hormone receptors (7TM receptors) at its C-terminus. The N-terminus of the encoded protein has six EGF-like modules, separated from the transmembrane segments by a serine/threonine-rich domain, a feature reminiscent of mucin-like, single-span, integral membrane glycoproteins with adhesive properties. Multiple alternatively spliced transcript variants encoding different isoforms have been found for this gene. [provided by RefSeq, Jan 2012]

**Species/Host:** HEK293

**Molecular Weight:** The protein has a predicted molecular mass of 63.9 kDa after removal of the signal peptide. The apparent molecular mass of ADGRE1-His is approximately 100–130 kDa due to glycosylation.

**Molecular Characterization:** ADGRE1(His21-Asp599) 6×His tag

**Purity:** The purity of the protein is greater than 85% as determined by SDS-PAGE and Coomassie blue staining.

**Formulation & Reconstitution:** Lyophilized from nanodisc solubilization buffer (20 mM Tris-HCl, 150 mM NaCl, pH 8.0). Normally 5% – 8% trehalose is added as protectants before lyophilization.

**Storage & Shipping:** Store at -20°C to -80°C for 12 months in lyophilized form. After reconstitution, if not intended for use within a month, aliquot and store at -80°C (Avoid repeated freezing and thawing). Lyophilized proteins are shipped at ambient temperature.

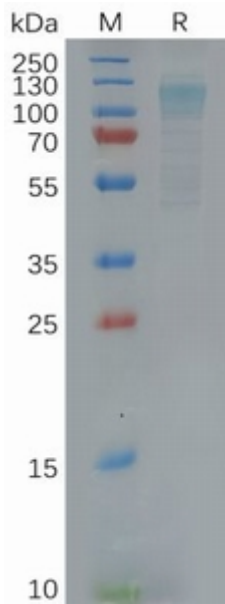


Figure 1. Human ADGRE1 Protein, His Tag on SDS-PAGE under reducing condition.