

HUMAN BAFF PROTEIN, HFC TAG

Cat.#: 11169

Product Name: Human BAFF Protein

Size: 10 µg, 50 µg and 100 µg

Synonyms: TNFSF13B;AFF;LYS;D257;TL;ALL1;HANK;NFSF20;TNF4;ALL-1

Target: BAFF

UNIPROT ID: Q9Y275

Description: Recombinant Human BAFF protein with N-terminal human Fc

Background: The protein encoded by this gene is a cytokine that belongs to the tumor necrosis factor (TNF) ligand family. This cytokine is a ligand for receptors TNFRSF13B/TACI, TNFRSF17/BCMA, and TNFRSF13C/BAFFR. This cytokine is expressed in B cell lineage cells, and acts as a potent B cell activator. It has been also shown to play an important role in the proliferation and differentiation of B cells. Alternatively spliced transcript variants encoding distinct isoforms have been identified.

Species/Host: HEK293

Molecular Weight: The protein has a predicted molecular mass of 43.2 kDa after removal of the signal peptide. The apparent molecular mass of hFc-BAFF is approximately 50-55 kDa due to glycosylation.

Molecular Characterization: hFc(Glu99-Ala330) BAFF(Ala134-Leu285)

Purity: The purity of the protein is greater than 95% as determined by SDS-PAGE and Coomassie blue staining.

Formulation & Reconstitution: Lyophilized from nanodisc solubilization buffer (20 mM Tris-HCl, 150 mM NaCl, pH 8.0). Normally 5% – 8% trehalose is added as protectants before lyophilization.

Storage & Shipping: Store at -20°C to -80°C for 12 months in lyophilized form. After reconstitution, if not intended for use within a month, aliquot and store at -80°C (Avoid repeated freezing and thawing). Lyophilized proteins are shipped at ambient temperature.

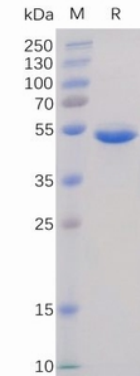


Figure 1. Human BAFF Protein, hFc Tag on SDS-PAGE under reducing condition.

Human BAFF, hFc Tagged protein ELISA

0.2 μ g of BAFF, hFc Tagged protein per well

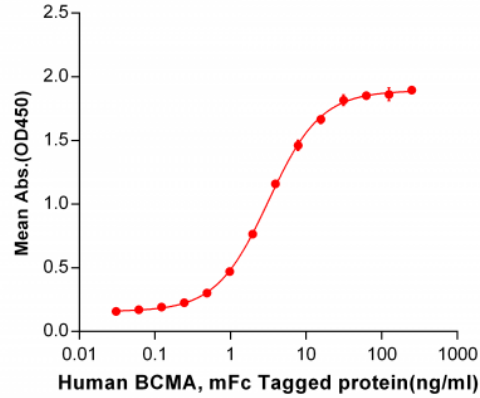


Figure 2. ELISA plate pre-coated by 2 μ g/ml (100 μ l/well) Human BAFF, hFc tagged protein (11169) can bind Human BCMA, mFc tagged protein 11163 in a linear range of 0.03-15.625 ng/ml.

Human BAFF, hFc Tagged protein ELISA

0.2 μ g of BAFF, hFc Tagged protein per well

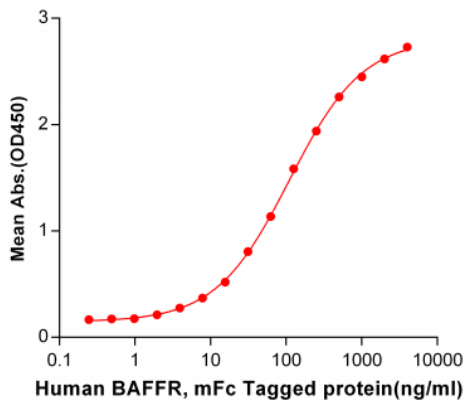


Figure 3. ELISA plate pre-coated by 2 μ g/ml (100 μ l/well) Human BAFF, hFc tagged protein (11169) can bind Human BAFF-R, mFc tagged protein 11170 in a linear range of 0.488-250.0 ng/ml.

Human BAFF, hFc Tagged protein ELISA

0.2 μ g of Human BAFF, hFc Tagged protein per well

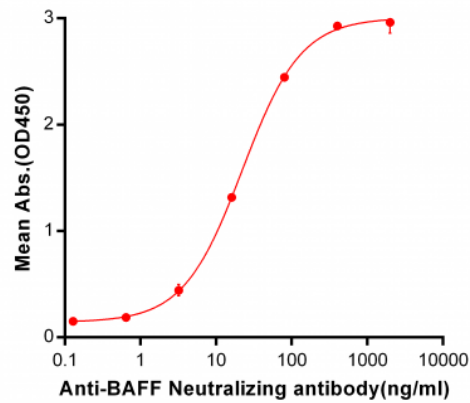


Figure 4. ELISA plate pre-coated by 2 μ g/ml (100 μ l/well) Human BAFF, hFc tagged protein (11169) can bind Anti-BAFF Neutralizing antibody 28053 in a linear range of 3.2-400 ng/ml.

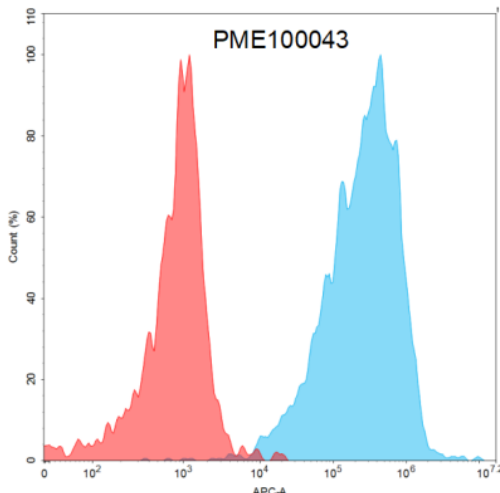


Figure 5. Flow cytometry analysis with 15 μ g/ml Human BAFF Protein, hFc tag (11169) on Expi293 cells transfected with human BAFF-R (Blue histogram) or Expi293 transfected with irrelevant protein (Red histogram).



Product Description

Pioneering GTPase and Oncogene Product Development since 2010
