

HUMAN BCMA PROTEIN, MFC TAG

Cat.#: 11163

Product Name: Human BCMA Protein

Size: 10 µg, 50 µg and 100 µg

Synonyms: TNFRSF17;CD269;BCM;BCMA

Target: BCMA

UNIPROT ID: Q02223

Description: Recombinant human BCMA protein with C-terminal mouse Fc tag

Background: B-cell maturation protein (BCMA or BCM), is also known as Tumor necrosis factor receptor superfamily member 17 (TNFRSF17), which is encoded by the TNFRSF17 gene. TNFRSF17 is a cell surface receptor of the TNF receptor superfamily which recognizes B-cell activating factor (BAFF). This receptor is expressed in immune organs and mature B cell lines. BCMA promotes B-cell survival and plays a role in the regulation of humoral immunity. BCMA can activate NF-kappa-B and JNK.

Species/Host: HEK293

Molecular Weight: The protein has a predicted molecular mass of 32.1 kDa after removal of the signal peptide.

Molecular Characterization: BCMA(Met1-Ala54) mFc(Pro99-Lys330)

Purity: The purity of the protein is greater than 95% as determined by SDS-PAGE and Coomassie blue staining.

Formulation & Reconstitution: Lyophilized from nanodisc solubilization buffer (20 mM Tris-HCl, 150 mM NaCl, pH 8.0). Normally 5% – 8% trehalose is added as protectants before lyophilization.

Storage & Shipping: Store at -20°C to -80°C for 12 months in lyophilized form. After reconstitution, if not intended for use within a month, aliquot and store at -80°C (Avoid repeated freezing and thawing). Lyophilized proteins are shipped at ambient temperature.

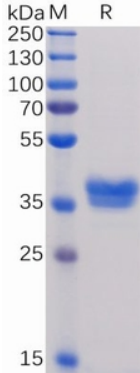


Figure 1. Human BCMA, mFc Tag on SDS-PAGE under reducing condition.

Human BCMA, mFc Tagged protein ELISA

0.2 μ g of BAFF, hFc Tagged protein per well

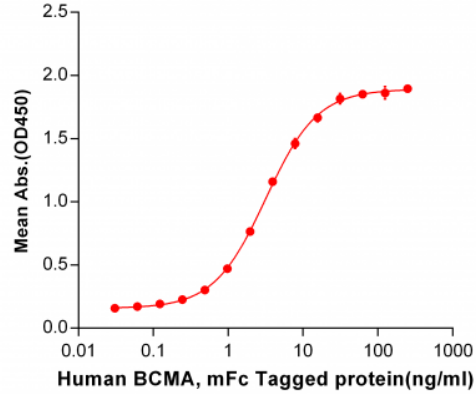


Figure 2. ELISA plate pre-coated by 2 μ g/ml (100 μ l/well) Human BAFF, hFc tagged protein 11169 can bind Human BCMA, mFc tagged protein (11163) in a linear range of 0.03-15.625 ng/ml.

Human BCMA, mFc Tagged protein ELISA

0.2 μ g of Human BCMA, mFc tagged protein per well

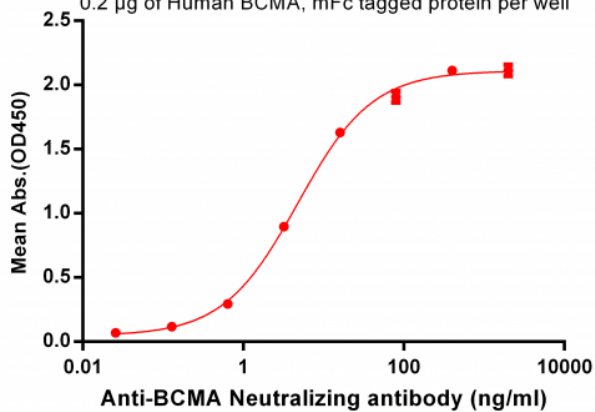


Figure 3. ELISA plate pre-coated by 2 μ g/ml (100 μ l/well) Human BCMA, mFc tagged protein (11163) can bind Anti-BCMA Neutralizing antibody 28037 in a linear range of 0.64-80.0 ng/ml.

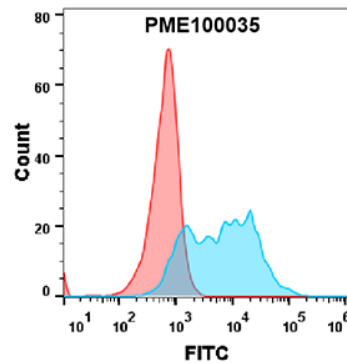


Figure 4. Flow cytometry analysis with 1 μ g/ml Human BCMA Protein, mFc tag (11163) on Expi293 cells transfected with human BAFF (Blue histogram) or Expi293 transfected with irrelevant protein (Red histogram).