

## HUMAN BTLA PROTEIN, HFC TAG

**Cat.#:** 11323

**Product Name:** Human BTLA Protein

**Size:** 10 µg, 50 µg and 100 µg

**Synonyms:** BTLA;CD272

**Target:** BTLA

**UNIPROT ID:** Q7Z6A9

**Description:** Recombinant human BTLA protein with C-terminal Human Fc tag

**Background:** This gene encodes a member of the immunoglobulin superfamily. The encoded protein contains a single immunoglobulin (Ig) domain and is a receptor that relays inhibitory signals to suppress the immune response. Alternative splicing results in multiple transcript variants. Polymorphisms in this gene have been associated with an increased risk of rheumatoid arthritis.

**Species/Host:** HEK293

**Molecular Weight:** The protein has a predicted molecular mass of 39.9 kDa after removal of the signal peptide. The apparent molecular mass of Human-BTLA-hFc is approximately 55-70 kDa due to glycosylation.

**Molecular Characterization:** Human BTLA(Lys31-Ser150) hFc(Glu99-Ala330)

**Purity:** The purity of the protein is greater than 95% as determined by SDS-PAGE and Coomassie blue staining.

**Formulation & Reconstitution:** Lyophilized from nanodisc solubilization buffer (20 mM Tris-HCl, 150 mM NaCl, pH 8.0). Normally 5% – 8% trehalose is added as protectants before lyophilization.

**Storage & Shipping:** Store at -20°C to -80°C for 12 months in lyophilized form. After reconstitution, if not intended for use within a month, aliquot and store at -80°C (Avoid repeated freezing and thawing). Lyophilized proteins are shipped at ambient temperature.

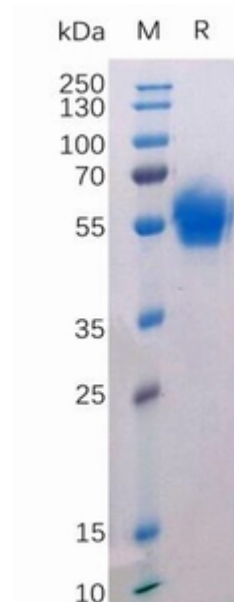


Figure 1. Human BTLA Protein, hFc Tag on SDS-PAGE under reducing condition.

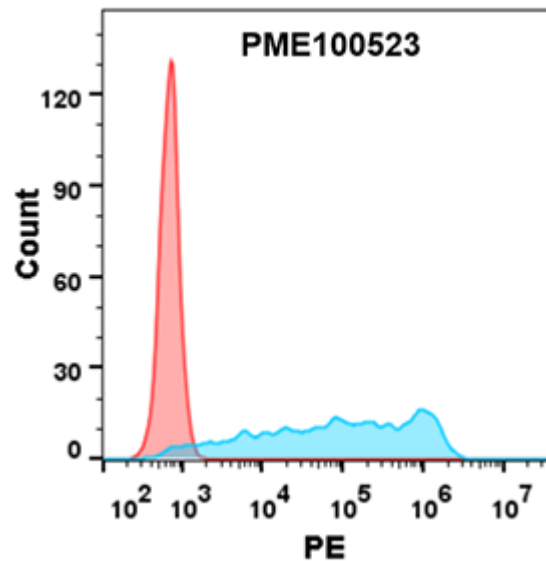


Figure 2. Flow cytometry analysis with 1 $\mu$ g/ml Human BTLA Protein, hFc tag (11323) on Expi293 cells transfected with human HVEM (Blue histogram) or Expi293 transfected with irrelevant protein (Red histogram).