

HUMAN CCL11 PROTEIN**Cat.#:** 12073**Product Name:** Human CCL11 Protein**Size:** 10 µg, 50 µg and 100 µg**Synonyms:** Eotaxin; C-C Motif Chemokine 11; Eosinophil Chemotactic Protein; Small-Inducible Cytokine A11; CCL11; SCYA11**Target:** CCL11**UNIPROT ID:** P51671**Description:** Recombinant Human C-C Motif Chemokine 11 is produced by our E.coli expression system and the target gene encoding Gly24-Pro97 is expressed.**Background:** C-C Motif Chemokine 11 (CCL11) is a secreted protein that belongs to the intercrine beta (chemokine CC) family. In response to the presence of allergens, CCL11 selectively recruits eosinophils, a prominent feature of allergic inflammatory reactions. The effects of CCL11 are mediated by its binding to a G-protein-linked receptor known as a chemokine receptor. Chemokine receptors for CCL11 include CCR2, CCR3 and CCR5. However, it has been found that CCL11 has high degree selectivity for its receptor, such that they are inactive on neutrophils and monocytes, which do not express CCR3.**Species/Host:** E.coli**Molecular Weight:** 8.56 KDa**Molecular Characterization:** Not available**Purity:** Greater than 95% as determined by reducing SDS-PAGE.**Formulation & Reconstitution:** Lyophilized from nanodisc solubilization buffer (20 mM Tris-HCl, 150 mM NaCl, pH 8.0). Normally 5% – 8% trehalose is added as protectants before lyophilization.**Storage & Shipping:** Store at -20°C to -80°C for 12 months in lyophilized form. After reconstitution, if not intended for use within a month, aliquot and store at -80°C (Avoid repeated freezing and thawing). Lyophilized proteins are shipped at ambient temperature.

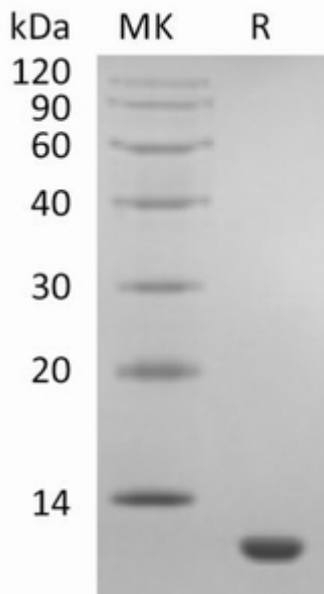


Figure 1. Greater than 95% as determined by reducing SDS-PAGE.