

**HUMAN CCR2 PROTEIN, HFC TAG****Cat.#:** 11673**Product Name:** Human CCR2 Protein**Size:** 10 µg, 50 µg and 100 µg**Synonyms:** CC-CKR-2;CCR-2;CCR2A;CCR2B;CD192;CKR2;CKR2A;CKR2B;CMKBR2;MCP-1-R**Target:** CCR2**UNIPROT ID:** P41597**Description:** Recombinant Human CCR2 with C-terminal human Fc tag**Background:** The protein encoded by this gene is a receptor for monocyte chemoattractant protein-1, a chemokine which specifically mediates monocyte chemotaxis. Monocyte chemoattractant protein-1 is involved in monocyte infiltration in inflammatory diseases such as rheumatoid arthritis as well as in the inflammatory response against tumors. The encoded protein mediates agonist-dependent calcium mobilization and inhibition of adenylyl cyclase. This protein can also be a coreceptor with CD4 for HIV-1 infection. This gene is located in the chemokine receptor gene cluster region of chromosome 3. [provided by RefSeq, Aug 2017]**Species/Host:** HEK293**Molecular Weight:** The protein has a predicted molecular mass of 31.0 kDa after removal of the signal peptide. The apparent molecular mass of CCR2-hFc is approximately 35-55 kDa due to glycosylation.**Molecular Characterization:** CCR2(Met1-Ala42) hFc(Glu99-Ala330)**Purity:** The purity of the protein is greater than 95% as determined by SDS-PAGE and Coomassie blue staining.**Formulation & Reconstitution:** Lyophilized from nanodisc solubilization buffer (20 mM Tris-HCl, 150 mM NaCl, pH 8.0). Normally 5% – 8% trehalose is added as protectants before lyophilization.**Storage & Shipping:** Store at -20°C to -80°C for 12 months in lyophilized form. After reconstitution, if not intended for use within a month, aliquot and store at -80°C (Avoid repeated freezing and thawing). Lyophilized proteins are shipped at ambient temperature.

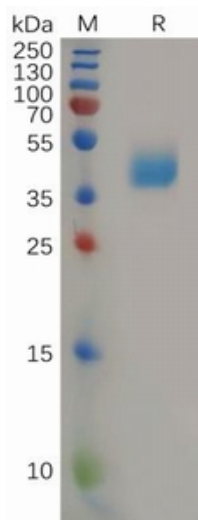


Figure 1. Human CCR2 Protein, hFc Tag on SDS-PAGE under reducing condition.