

## HUMAN CD138 PROTEIN, HFC-HIS TAG

**Cat.#:** 11134

**Product Name:** Human CD138 Protein

**Size:** 10 µg, 50 µg and 100 µg

**Synonyms:** SDC1; Syndecan-1; CD138; SYND1; SDC

**Target:** CD138

**UNIPROT ID:** P18827

**Description:** Recombinant human CD138 protein with C-terminal human Fc and 6xHis tag

**Background:** Syndecan-1 (SYND1 or SDC1) is also known as CD antigen CD138, is a transmembrane (type I) heparan sulfate proteoglycan and is a member of the syndecan proteoglycan family. The syndecans mediate cell binding, cell signaling, and cytoskeletal organization and syndecan receptors are required for internalization of the HIV-1 tat protein. The syndecan-1 / SDC1 protein functions as an integral membrane protein and participates in cell proliferation, cell migration and cell-matrix interactions via its receptor for extracellular matrix proteins. It is a useful marker for plasma cells, but only if the cells tested are already known to be derived from blood.

**Species/Host:** HEK293

**Molecular Weight:** The protein has a predicted molecular mass of 50.8 kDa after removal of the signal peptide. The apparent molecular mass of CD138-hFc-His is approximately 70-100 kDa due to glycosylation.

**Molecular Characterization:** CD138(Gln23-Gly254) hFc(Glu99-Ala330) 6×His tag

**Purity:** The purity of the protein is greater than 95% as determined by SDS-PAGE and Coomassie blue staining.

**Formulation & Reconstitution:** Lyophilized from nanodisc solubilization buffer (20 mM Tris-HCl, 150 mM NaCl, pH 8.0). Normally 5% – 8% trehalose is added as protectants before lyophilization.

**Storage & Shipping:** Store at -20°C to -80°C for 12 months in lyophilized form. After reconstitution, if not intended for use within a month, aliquot and store at -80°C (Avoid repeated freezing and thawing). Lyophilized proteins are shipped at ambient temperature.

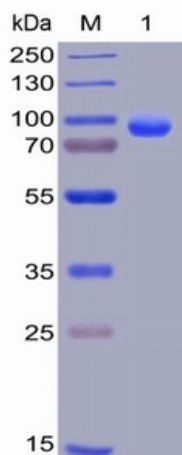


Figure 1. Human CD138, hFc-His Tag on SDS-PAGE under reducing condition.

### Anti-IL23A(guselkumab biosimilar) mAb ELISA

0.2 µg of Human IL23A, hFc tagged protein per well

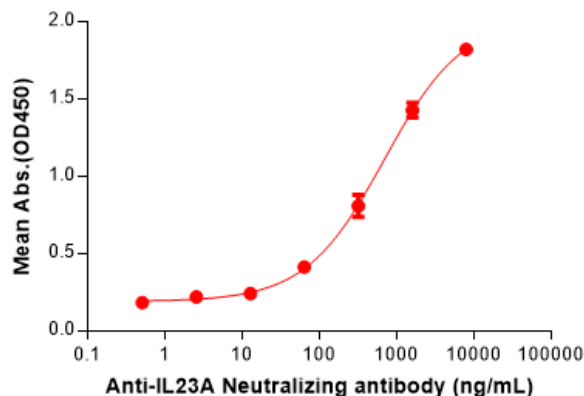


Figure 2. ELISA plate pre-coated by 2 µg/ml (100 µl/well) Human CD138, hFc-His tagged protein (11134) can bind Anti-CD138 antibody in a linear range of 1.6-200 ng/ml.



# Product Description

Pioneering GTPase and Oncogene Product Development since 2010

---