

## HUMAN CD155 PROTEIN, HFC TAG

**Cat.#:** 11293

**Product Name:** Human CD155 Protein

**Size:** 10 µg, 50 µg and 100 µg

**Synonyms:** PVR;FLJ25946;PVS;CD155;TAGE4;HVED;NECL5

**Target:** CD155

**UNIPROT ID:** P15151

**Description:** Recombinant human CD155 protein with C-terminal human Fc tag

**Background:** The protein encoded by this gene is a transmembrane glycoprotein belonging to the immunoglobulin superfamily. The external domain mediates cell attachment to the extracellular matrix molecule vitronectin, while its intracellular domain interacts with the dynein light chain Tctex-1/DYNLT1. The gene is specific to the primate lineage, and serves as a cellular receptor for poliovirus in the first step of poliovirus replication. Multiple transcript variants encoding different isoforms have been found for this gene.

**Species/Host:** HEK293

**Molecular Weight:** The protein has a predicted molecular mass of 61.2 kDa after removal of the signal peptide. The apparent molecular mass of CD155-hFc is approximately 70-100 kDa due to glycosylation.

**Molecular Characterization:** CD155(Trp21-Asn343) hFc(Glu99-Ala330)

**Purity:** The purity of the protein is greater than 95% as determined by SDS-PAGE and Coomassie blue staining.

**Formulation & Reconstitution:** Lyophilized from nanodisc solubilization buffer (20 mM Tris-HCl, 150 mM NaCl, pH 8.0). Normally 5% – 8% trehalose is added as protectants before lyophilization.

**Storage & Shipping:** Store at -20°C to -80°C for 12 months in lyophilized form. After reconstitution, if not intended for use within a month, aliquot and store at -80°C (Avoid repeated freezing and thawing). Lyophilized proteins are shipped at ambient temperature.

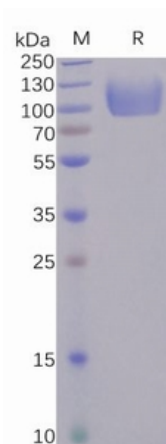


Figure 1. Human CD155 Protein, hFc Tag on SDS-PAGE under reducing condition.

### Human CD155, hFc Tagged protein ELISA

0.2  $\mu$ g of Human DNAM-1, mFc-His Tagged protein per well

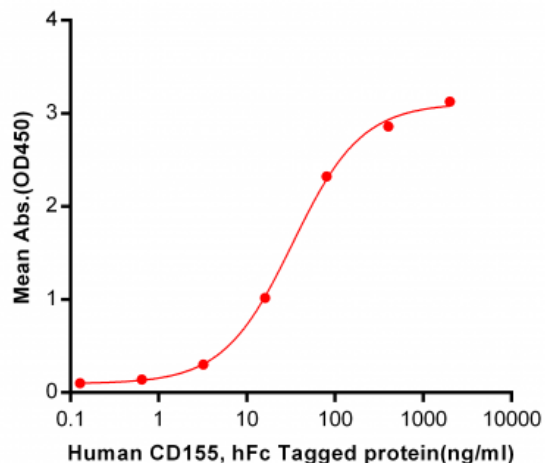


Figure 2. ELISA plate pre-coated by 2  $\mu$ g/ml (100  $\mu$ l/well) Human DNAM-1, mFc-His tagged protein 11176 can bind Human CD155, hFc Tagged protein 11293 in a linear range of 0.128-32.88 ng/ml.

### Human CD155, hFc Tagged protein ELISA

0.2  $\mu$ g of CD155, hFc Tagged protein per well

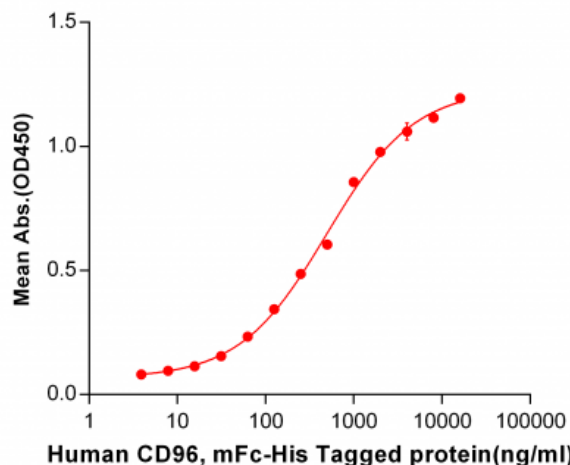


Figure 3. ELISA plate pre-coated by 2  $\mu$ g/ml (100  $\mu$ l/well) Human CD96, mFc-His tagged protein 11156 can bind Human CD155, hFc tagged protein (11293) in a linear range of 62.5-4000 ng/ml.