

**HUMAN CD27 PROTEIN, HFC TAG****Cat.#:** 11285**Product Name:** Human CD27 Protein**Size:** 10 µg, 50 µg and 100 µg**Synonyms:** CD27;TNFRSF7;SI52;T14;Tp55**Target:** CD27**UNIPROT ID:** P26842**Description:** Recombinant human CD27 protein with C-terminal human Fc tag**Background:** The protein encoded by this gene is a member of the TNF-receptor superfamily. This receptor is required for generation and long-term maintenance of T cell immunity. It binds to ligand CD70, and plays a key role in regulating B-cell activation and immunoglobulin synthesis. This receptor transduces signals that lead to the activation of NF-kappaB and MAPK8/JNK. Adaptor proteins TRAF2 and TRAF5 have been shown to mediate the signaling process of this receptor. CD27-binding protein (SIVA), a proapoptotic protein, can bind to this receptor and is thought to play an important role in the apoptosis induced by this receptor.**Species/Host:** HEK293**Molecular Weight:** The protein has a predicted molecular mass of 45.3 kDa after removal of the signal peptide. The apparent molecular mass of CD27-hFc is approximately 55-70 kDa due to glycosylation.**Molecular Characterization:** CD27(Ala20-Arg191) hFc(Glu99-Ala330)**Purity:** The purity of the protein is greater than 95% as determined by SDS-PAGE and Coomassie blue staining.**Formulation & Reconstitution:** Lyophilized from nanodisc solubilization buffer (20 mM Tris-HCl, 150 mM NaCl, pH 8.0). Normally 5% – 8% trehalose is added as protectants before lyophilization.**Storage & Shipping:** Store at -20°C to -80°C for 12 months in lyophilized form. After reconstitution, if not intended for use within a month, aliquot and store at -80°C (Avoid repeated freezing and thawing). Lyophilized proteins are shipped at ambient temperature.

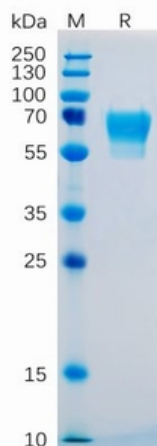


Figure 1. Human CD27 Protein, hFc Tag on SDS-PAGE under reducing condition.

## Human CD27, hFc Tagged protein ELISA

0.2  $\mu$ g of CD27, hFc Tagged protein per well

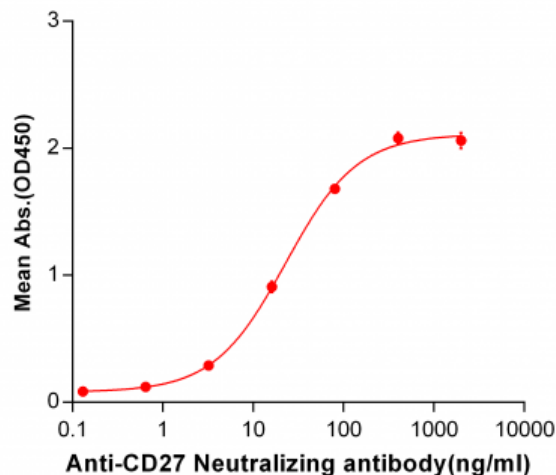


Figure 2. ELISA plate pre-coated by 2  $\mu$ g/ml (100  $\mu$ l/well) Human CD27, hFc tagged protein (11285) can bind Anti-CD27 Neutralizing antibody 28027 in a linear range of 3.2-80.0 ng/ml.

## Human CD27, hFc Tagged protein ELISA

0.2  $\mu$ g of CD27, hFc Tagged protein per well

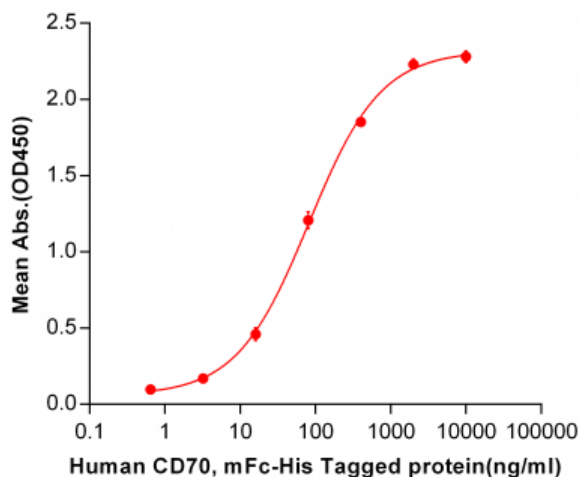


Figure 3. ELISA plate pre-coated by 2  $\mu$ g/ml (100  $\mu$ l/well) Human CD27, hFc tagged protein (11285) can bind Human CD70,mFc-His tagged protein 11168 in a linear range of 3.2-400 ng/ml.

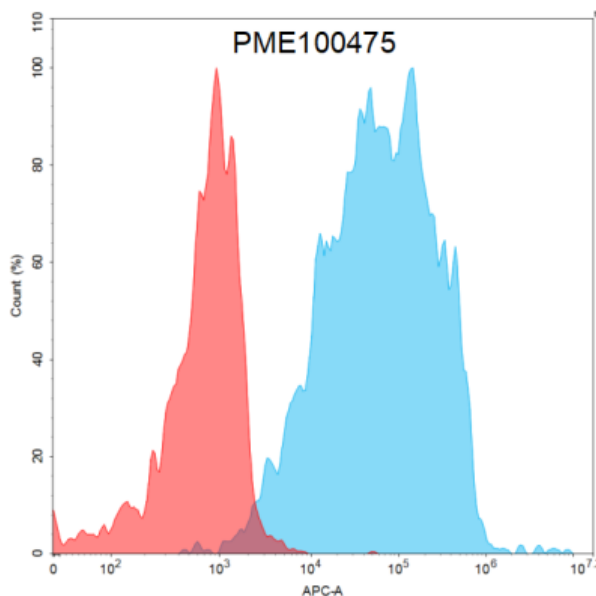


Figure 4. Flow cytometry analysis with 15  $\mu$ g/ml Human CD27 Protein, hFc tag (11285) on Expi293 cells transfected with human CD70 (Blue histogram) or Expi293 transfected with irrelevant protein (Red histogram).