

HUMAN CD30 LIGAND PROTEIN, MFC-HIS TAG

Cat.#: 11167

Product Name: Human CD30 Ligand Protein

Size : 10 µg, 50 µg and 100 µg

Synonyms: CD30-L;DI53;NFSF8;D30L;D30LG;DI53 antigen;D30 antigen ligand;D30 Ligand

Target: CD30 Ligand

UNIPROT ID: P32971

Description: Recombinant human CD30 Ligand Protein with N-terminal mouse Fc and C-terminal 6xHis tag

Background: The protein encoded by this gene is a cytokine that belongs to the tumor necrosis factor (TNF) ligand family. This cytokine is a ligand for TNFRSF8/CD30, which is a cell surface antigen and a marker for Hodgkin lymphoma and related hematologic malignancies. The engagement of this cytokine expressed on B cell surface plays an inhibitory role in modulating Ig class switch. This cytokine was shown to enhance cell proliferation of some lymphoma cell lines, while to induce cell death and reduce cell proliferation of other lymphoma cell lines. The pleiotropic biologic activities of this cytokine on different CD30 lymphoma cell lines may play a pathophysiologic role in Hodgkin's and some non-Hodgkin's lymphomas. Two transcript variants encoding different isoforms have been found for this gene.

Species/Host: HEK293

Molecular Weight: The protein has a predicted molecular mass of 48.0 kDa after removal of the signal peptide. The apparent molecular mass of mFc-CD30 Ligand-His is approximately 53-70 kDa due to glycosylation.

Molecular Characterization: mFc(Pro99-Lys330) CD30 Ligand(Gln63-Asp234) 6xHis

Purity: The purity of the protein is greater than 95% as determined by SDS-PAGE and Coomassie blue staining.

Formulation & Reconstitution: Lyophilized from nanodisc solubilization buffer (20 mM Tris-HCl, 150 mM NaCl, pH 8.0). Normally 5% – 8% trehalose is added as protectants before lyophilization.

Storage & Shipping: Store at -20°C to -80°C for 12 months in lyophilized form. After reconstitution, if not intended for use within a month, aliquot and store at -80°C (Avoid repeated freezing and thawing). Lyophilized proteins are shipped at ambient temperature.

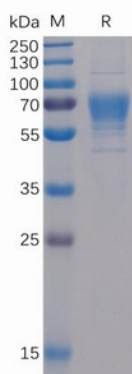


Figure 1. Human CD30 Ligand Protein, mFc-His Tag on SDS-PAGE under reducing condition.

Human CD30 Ligand, mFc-His Tagged protein ELISA

0.2 µg of CD30, His Tagged protein per well

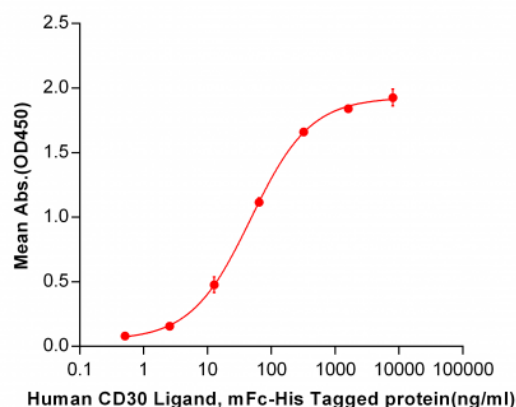


Figure 2. ELISA plate pre-coated by 2 µg/ml (100 µl/well) Human CD30, His tagged protein 11291 can bind Human CD30 Ligand, mFc-His tagged protein (11167) in a linear range of 2.56-320 ng/ml.