

HUMAN CD30 PROTEIN, HIS TAG

Cat.#: 11291

Product Name: Human CD30 Protein

Size: 10 µg, 50 µg and 100 µg

Synonyms: TNFRSF8;D30;IS166E;i-1

Target: CD30

UNIPROT ID: P28908

Description: Recombinant human CD30 protein with C-terminal 6xHis tag

Background: The protein encoded by this gene is a member of the TNF-receptor superfamily. This receptor is expressed by activated, but not by resting, T and B cells. TRAF2 and TRAF5 can interact with this receptor, and mediate the signal transduction that leads to the activation of NF-kappaB. This receptor is a positive regulator of apoptosis, and also has been shown to limit the proliferative potential of autoreactive CD8 effector T cells and protect the body against autoimmunity. Two alternatively spliced transcript variants of this gene encoding distinct isoforms have been reported.

Species/Host: HEK293

Molecular Weight: The protein has a predicted molecular mass of 39.3 kDa after removal of the signal peptide. The apparent molecular mass of CD30-His is approximately 55-70 kDa due to glycosylation.

Molecular Characterization: CD30(Phe19-Lys379) 6xHis tag

Purity: The purity of the protein is greater than 95% as determined by SDS-PAGE and Coomassie blue staining.

Formulation & Reconstitution: Lyophilized from nanodisc solubilization buffer (20 mM Tris-HCl, 150 mM NaCl, pH 8.0). Normally 5% – 8% trehalose is added as protectants before lyophilization.

Storage & Shipping: Store at -20°C to -80°C for 12 months in lyophilized form. After reconstitution, if not intended for use within a month, aliquot and store at -80°C (Avoid repeated freezing and thawing). Lyophilized proteins are shipped at ambient temperature.

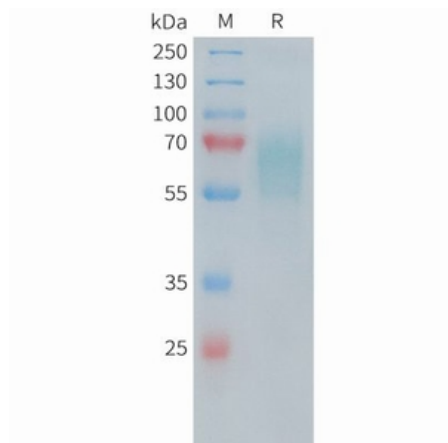


Figure 1. Human CD30 Protein, His Tag on SDS-PAGE under reducing condition.

Human CD30, His Tagged protein ELISA

0.2 μ g of CD30, His Tagged protein per well

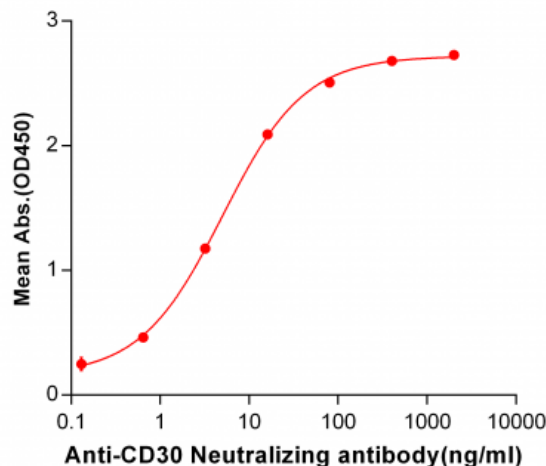


Figure 2. ELISA plate pre-coated by 2 μ g/ml (100 μ l/well) Human CD30, His tagged protein (11291) can bind Anti-CD30 Neutralizing antibody 28026 in a linear range of 0.13-80.0 ng/ml.

Human CD30, His Tagged protein ELISA

0.2 μ g of CD30, His Tagged protein per well

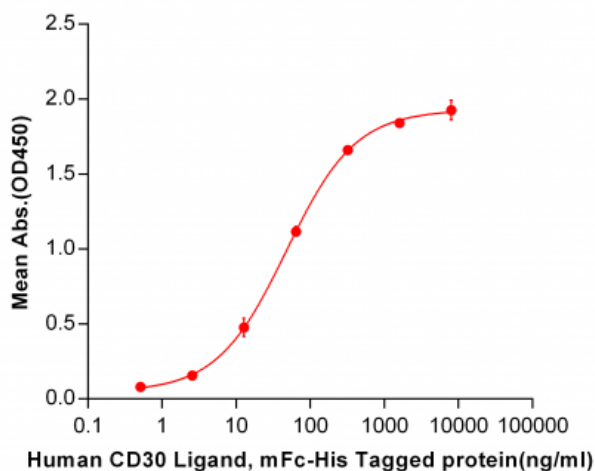


Figure 3. ELISA plate pre-coated by 2 μ g/ml (100 μ l/well) Human CD30, His tagged protein (11291) can bind Human CD30 Ligand, mFc-His tagged protein 11167 in a linear range of 2.56-320 ng/ml.

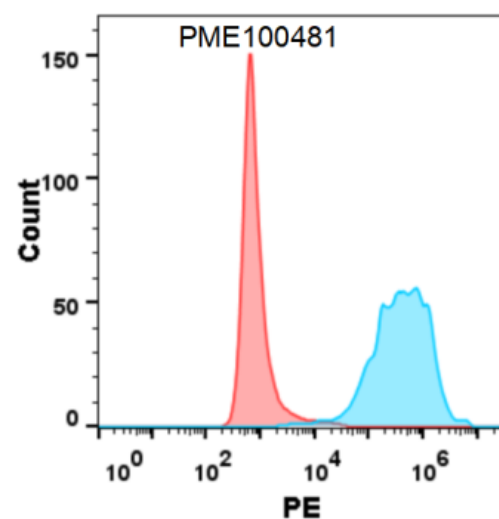


Figure 4. Flow cytometry analysis with 1 μ g/ml Human CD30 Protein, His tag (11291) on Expi293 cells transfected with human CD30L (Blue histogram) or Expi293 transfected with irrelevant protein (Red histogram).