

## HUMAN CD300LG PROTEIN, HIS TAG

**Cat.#:** 11862

**Product Name:** Human CD300LG Protein

**Size:** 10 µg, 50 µg and 100 µg

**Synonyms:** CLM-9;CLM9;NEPMUCIN;TREM-4;TREM4

**Target:** CD300LG

**UNIPROT ID:** Q6UXG3

**Description:** Recombinant Human CD300LG Protein with C-terminal 6xHis tag

**Background:** Members of the CD300 (see MIM 606786)-like (CD300L) family, such as CD300LG, are widely expressed on hematopoietic cells. All CD300L proteins are type I cell surface glycoproteins that contain a single immunoglobulin (Ig) V-like domain (Takatsu et al., 2006 [PubMed 16876123]).[supplied by OMIM, Mar 2008]

**Species/Host:** HEK293

**Molecular Weight:** The protein has a predicted molecular mass of 25.6 kDa after removal of the signal peptide. The apparent molecular mass of CD300LG-His is approximately 25-70 kDa due to glycosylation.

**Molecular Characterization:** CD300LG(Leu19-Arg247) 6×His tag

**Purity:** The purity of the protein is greater than 85% as determined by SDS-PAGE and Coomassie blue staining.

**Formulation & Reconstitution:** Lyophilized from nanodisc solubilization buffer (20 mM Tris-HCl, 150 mM NaCl, pH 8.0). Normally 5% – 8% trehalose is added as protectants before lyophilization.

**Storage & Shipping:** Store at -20°C to -80°C for 12 months in lyophilized form. After reconstitution, if not intended for use within a month, aliquot and store at -80°C (Avoid repeated freezing and thawing). Lyophilized proteins are shipped at ambient temperature.

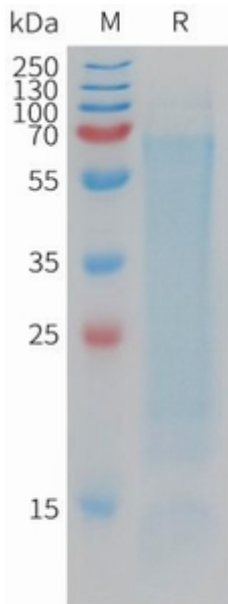


Figure 1. Human CD300LG Protein, His Tag on SDS-PAGE under reducing condition.