

## HUMAN CD36 PROTEIN, HFC TAG

**Cat.#:** 11240

**Product Name:** Human CD36 Protein

**Size:** 10 µg, 50 µg and 100 µg

**Synonyms:** BDPLT10;CHDS7;FAT;GP3B;GP4;GPIV;PASIV;SCARB3

**Target:** CD36

**UNIPROT ID:** P16671

**Description:** Recombinant Human CD36 Protein with C-terminal human Fc tag

**Background:** The protein encoded by this gene is the fourth major glycoprotein of the platelet surface and serves as a receptor for thrombospondin in platelets and various cell lines. Since thrombospondins are widely distributed proteins involved in a variety of adhesive processes, this protein may have important functions as a cell adhesion molecule. It binds to collagen, thrombospondin, anionic phospholipids and oxidized LDL. It directly mediates cytoadherence of *Plasmodium falciparum* parasitized erythrocytes and it binds long chain fatty acids and may function in the transport and/or as a regulator of fatty acid transport. Mutations in this gene cause platelet glycoprotein deficiency. Multiple alternatively spliced transcript variants have been found for this gene.

**Species/Host:** HEK293

**Molecular Weight:** The protein has a predicted molecular mass of 72.8 kDa after removal of the signal peptide. The apparent molecular mass of CD36-hFc is approximately 100-130 kDa due to glycosylation.

**Molecular Characterization:** CD36(Gly30-Asn439) hFc(Glu99-Ala330)

**Purity:** The purity of the protein is greater than 95% as determined by SDS-PAGE and Coomassie blue staining.

**Formulation & Reconstitution:** Lyophilized from nanodisc solubilization buffer (20 mM Tris-HCl, 150 mM NaCl, pH 8.0). Normally 5% – 8% trehalose is added as protectants before lyophilization.

**Storage & Shipping:** Store at -20°C to -80°C for 12 months in lyophilized form. After reconstitution, if not intended for use within a month, aliquot and store at -80°C (Avoid repeated freezing and thawing). Lyophilized proteins are shipped at ambient temperature.

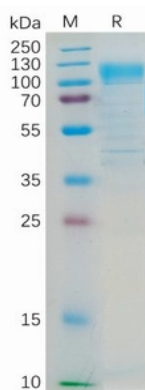


Figure 1. Human CD36 Protein, hFc Tag on SDS-PAGE under reducing condition.

### Human CD36,hFc Tagged protein ELISA

0.2 µg of Human CD36, hFc tagged protein per well

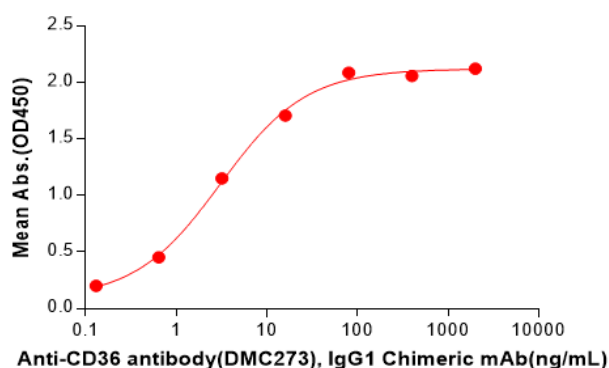


Figure 2. ELISA plate pre-coated by 2 µg/ml (100 µl/well) Human CD36 Protein, hFc Tag(11240) can bind Anti-CD36 antibody(DMC273), IgG1 Chimeric mAb in a linear range of 0.64-16 ng/mL.