

## HUMAN CD40 LIGAND PROTEIN, HFC TAG

**Cat.#:** 11241

**Product Name:** Human CD40 Ligand Protein

**Size:** 10 µg, 50 µg and 100 µg

**Synonyms:** CD40LG;D154;D40L;IGM1;GM;MD3;-BAM;NFSF5;RAP;p39

**Target:** CD40 Ligand

**UNIPROT ID:** P29965

**Description:** Recombinant human CD40 Ligand Protein with N-terminal Human Fc tag

**Background:** The protein encoded by this gene is expressed on the surface of T cells. It regulates B cell function by engaging CD40 on the B cell surface. A defect in this gene results in an inability to undergo immunoglobulin class switch and is associated with hyper-IgM syndrome.

**Species/Host:** HEK293

**Molecular Weight:** The protein has a predicted molecular mass of 42.3 kDa after removal of the signal peptide. The apparent molecular mass of hFc-CD40 Ligand is approximately 40-53 kDa due to glycosylation.

**Molecular Characterization:** hFc(Glu99-Ala330) CD40 Ligand(Met113-Leu261)

**Purity:** The purity of the protein is greater than 95% as determined by SDS-PAGE and Coomassie blue staining.

**Formulation & Reconstitution:** Lyophilized from nanodisc solubilization buffer (20 mM Tris-HCl, 150 mM NaCl, pH 8.0). Normally 5% – 8% trehalose is added as protectants before lyophilization.

**Storage & Shipping:** Store at -20°C to -80°C for 12 months in lyophilized form. After reconstitution, if not intended for use within a month, aliquot and store at -80°C (Avoid repeated freezing and thawing). Lyophilized proteins are shipped at ambient temperature.

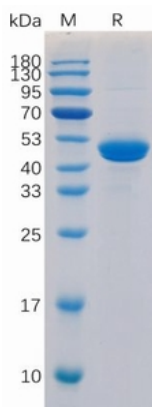


Figure 1. Human CD40 Ligand Protein, hFc Tag on SDS-PAGE under reducing condition.

## Human CD40 Ligand, hFc Tagged protein ELISA

0.2 µg of CD40 Ligand, hFc Tagged protein per well

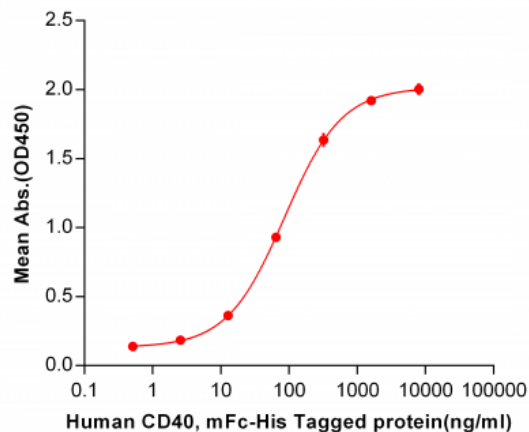


Figure 2. ELISA plate pre-coated by 2 µg/ml (100 µl/well) Human CD40 Ligand, hFc tagged protein (11241) can bind Human CD40, mFc-His tagged protein 11143 in a linear range of 0.51-320 ng/ml.

## Human CD40 Ligand, hFc Tagged protein ELISA

0.2 µg of Human CD40 Ligand, hFc Tagged protein per well

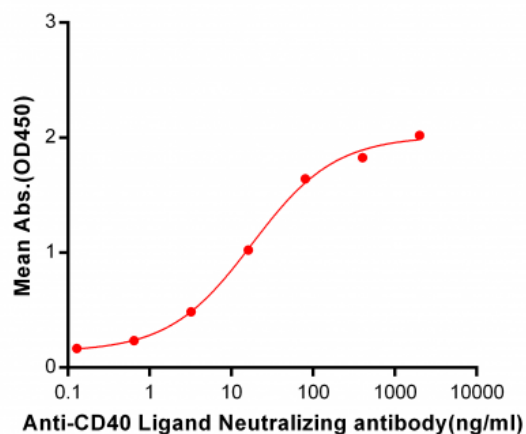


Figure 3. ELISA plate pre-coated by 2 µg/ml (100 µl/well) Human CD40L, hFc tagged protein (11241) can bind Anti-CD40L Neutralizing antibody 28051 in a linear range of 0.64-400 ng/ml.