

## HUMAN CD48 PROTEIN, HFC TAG

**Cat.#:** 11286

**Product Name:** Human CD48 Protein

**Size:** 10 µg, 50 µg and 100 µg

**Synonyms:** CD48;CMI;LAMF2;LAST;LAST1;EM-102;CT.1;CM-1;LAMF-2;LAST-1

**Target:** CD48

**UNIPROT ID:** P09326

**Description:** Recombinant human CD48 protein with C-terminal human Fc

**Background:** This gene encodes a member of the CD2 subfamily of immunoglobulin-like receptors which includes SLAM (signaling lymphocyte activation molecules) proteins. The encoded protein is found on the surface of lymphocytes and other immune cells, dendritic cells and endothelial cells, and participates in activation and differentiation pathways in these cells. The encoded protein does not have a transmembrane domain, however, but is held at the cell surface by a GPI anchor via a C-terminal domain which maybe cleaved to yield a soluble form of the receptor. Multiple transcript variants encoding different isoforms have been found for this gene.

**Species/Host:** HEK293

**Molecular Weight:** The protein has a predicted molecular mass of 48.5 kDa after removal of the signal peptide. The apparent molecular mass of CD48-hFc is approximately 55-70 kDa due to glycosylation.

**Molecular Characterization:** CD48(Gln27-Ser220) hFc(Glu99-Ala330)

**Purity:** The purity of the protein is greater than 95% as determined by SDS-PAGE and Coomassie blue staining.

**Formulation & Reconstitution:** Lyophilized from nanodisc solubilization buffer (20 mM Tris-HCl, 150 mM NaCl, pH 8.0). Normally 5% – 8% trehalose is added as protectants before lyophilization.

**Storage & Shipping:** Store at -20°C to -80°C for 12 months in lyophilized form. After reconstitution, if not intended for use within a month, aliquot and store at -80°C (Avoid repeated freezing and thawing). Lyophilized proteins are shipped at ambient temperature.

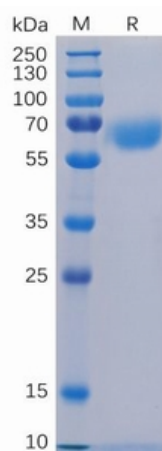


Figure 1. Human CD48 Protein, hFc Tag on SDS-PAGE under reducing condition.

### Human CD48, hFc Tagged protein ELISA

0.2 µg of CD48, hFc Tagged protein per well

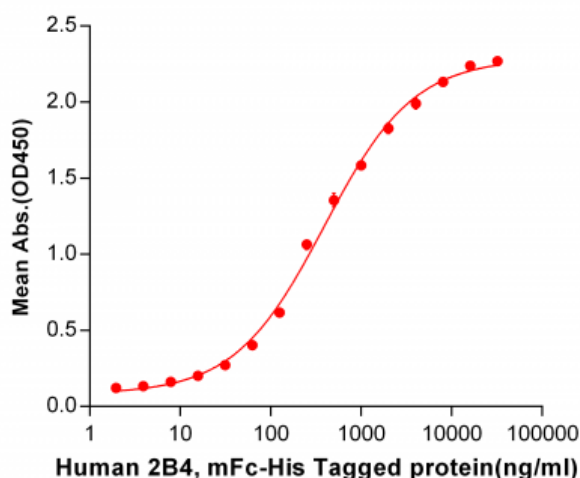


Figure 2. ELISA plate pre-coated by 2 µg/ml (100 µl/well) Human 2B4, mFc-His tagged protein 11138 can bind Human CD48, hFc tagged protein (11286) in a linear range of 31.25-4000 ng/ml.

