

HUMAN CD6 PROTEIN, HIS TAG**Cat.#:** 11728**Product Name:** Human CD6 Protein**Size:** 10 µg, 50 µg and 100 µg**Synonyms:** TP120**Target:** CD6**UNIPROT ID:** P30203**Description:** Recombinant human CD6 protein with C-terminal 6xHis tag**Background:** This gene encodes a protein found on the outer membrane of T-lymphocytes as well as some other immune cells. The encoded protein contains three scavenger receptor cysteine-rich (SRCR) domains and a binding site for an activated leukocyte cell adhesion molecule. The gene product is important for continuation of T cell activation. This gene may be associated with susceptibility to multiple sclerosis (PMID: 19525953, 21849685). Multiple transcript variants encoding different isoforms have been found for this gene. [provided by RefSeq, Dec 2011]**Species/Host:** HEK293**Molecular Weight:** The protein has a predicted molecular mass of 41.4 kDa after removal of the signal peptide. The apparent molecular mass of CD6-His is approximately 55-100 kDa due to glycosylation.**Molecular Characterization:** CD6(His18-Glu398) 6×His tag**Purity:** The purity of the protein is greater than 85% as determined by SDS-PAGE and Coomassie blue staining.**Formulation & Reconstitution:** Lyophilized from nanodisc solubilization buffer (20 mM Tris-HCl, 150 mM NaCl, pH 8.0). Normally 5% – 8% trehalose is added as protectants before lyophilization.**Storage & Shipping:** Store at -20°C to -80°C for 12 months in lyophilized form. After reconstitution, if not intended for use within a month, aliquot and store at -80°C (Avoid repeated freezing and thawing). Lyophilized proteins are shipped at ambient temperature.

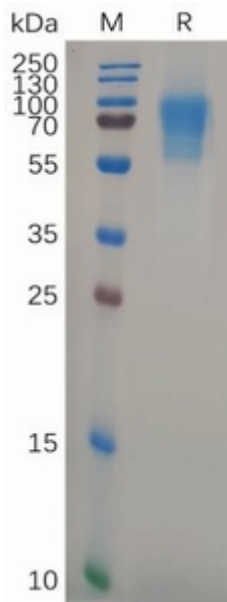


Figure 1. Human CD6 Protein, His Tag on SDS-PAGE under reducing condition.