

## HUMAN CDCP1 PROTEIN, HIS TAG

**Cat.#:** 11399

**Product Name:** Human CDCP1 Protein

**Size:** 10 µg, 50 µg and 100 µg

**Synonyms:** CD318;SIMA135;TRASK

**Target:** CDCP1

**UNIPROT ID:** Q9H5V8

**Description:** Recombinant human CDCP1 protein with C-terminal 6xHis tag

**Background:** This gene encodes a transmembrane protein which contains three extracellular CUB domains and acts as a substrate for Src family kinases. The protein plays a role in the tyrosine phosphorylation-dependent regulation of cellular events that are involved in tumor invasion and metastasis. Alternative splicing results in multiple transcript variants of this gene. [provided by RefSeq, May 2013]

**Species/Host:** HEK293

**Molecular Weight:** The protein has a predicted molecular mass of 72.7 kDa after removal of the signal peptide. The apparent molecular mass of CDCP1-His is approximately 100–130 kDa due to glycosylation.

**Molecular Characterization:** CDCP1(Phe30–Thr667) 6×His tag

**Purity:** The purity of the protein is greater than 95% as determined by SDS-PAGE and Coomassie blue staining.

**Formulation & Reconstitution:** Lyophilized from nanodisc solubilization buffer (20 mM Tris-HCl, 150 mM NaCl, pH 8.0). Normally 5% – 8% trehalose is added as protectants before lyophilization.

**Storage & Shipping:** Store at -20°C to -80°C for 12 months in lyophilized form. After reconstitution, if not intended for use within a month, aliquot and store at -80°C (Avoid repeated freezing and thawing). Lyophilized proteins are shipped at ambient temperature.

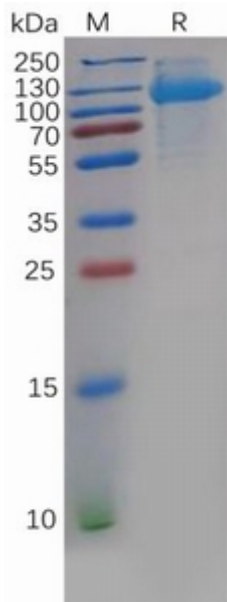


Figure 1. Human CDCP1 Protein, His Tag on SDS-PAGE under reducing condition.