

**HUMAN CLEC12A PROTEIN, HIS TAG****Cat.#:** 11215**Product Name:** Human CLEC12A Protein**Size:** 10 µg, 50 µg and 100 µg**Synonyms:** CLEC12A;ICL;LL-1;LL1;CAL2;CAL-2;D371**Target:** CLEC12A**UNIPROT ID:** Q5QGZ9**Description:** Recombinant human CLEC12A Protein with C-terminal 6xHis tag

**Background:** This gene encodes a member of the C-type lectin/C-type lectin-like domain (CTL/CTLD) superfamily. Members of this family share a common protein fold and have diverse functions, such as cell adhesion, cell-cell signaling, glycoprotein turnover, and roles in inflammation and immune response. The protein encoded by this gene is a negative regulator of granulocyte and monocyte function. Several alternatively spliced transcript variants of this gene have been described, but the full-length nature of some of these variants has not been determined. This gene is closely linked to other CTL/CTLD superfamily members in the natural killer gene complex region on chromosome 12p13.

**Species/Host:** HEK293

**Molecular Weight:** The protein has a predicted molecular mass of 24.6 kDa after removal of the signal peptide. The apparent molecular mass of CLEC12A-His is approximately 35-55 kDa due to glycosylation.

**Molecular Characterization:** CLEC12A(His65-Ala265) 6×His tag

**Purity:** The purity of the protein is greater than 95% as determined by SDS-PAGE and Coomassie blue staining.

**Formulation & Reconstitution:** Lyophilized from nanodisc solubilization buffer (20 mM Tris-HCl, 150 mM NaCl, pH 8.0). Normally 5% – 8% trehalose is added as protectants before lyophilization.

**Storage & Shipping:** Store at -20°C to -80°C for 12 months in lyophilized form. After reconstitution, if not intended for use within a month, aliquot and store at -80°C (Avoid repeated freezing and thawing). Lyophilized proteins are shipped at ambient temperature.

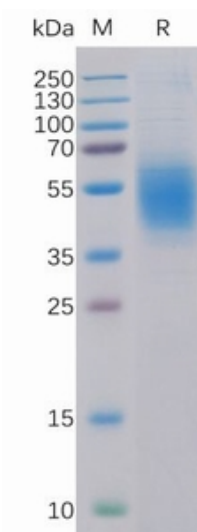


Figure 1. Human CLEC12A Protein, His Tag on SDS-PAGE under reducing condition.

## Human CLEC12A, His Tagged protein ELISA

0.2  $\mu$ g of Human CLEC12A, His tagged protein per well

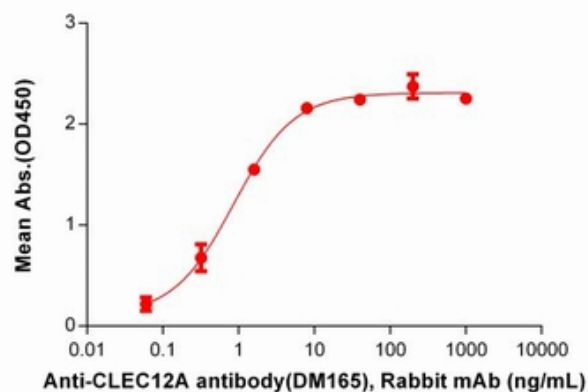


Figure 2. ELISA plate pre-coated by 2  $\mu$ g/ml (100  $\mu$ l/well) Human CLEC12A Protein, His Tag (11215) can bind Anti-CLEC12A antibody(DM165), Rabbit mAb in a linear range of 0.32-1.60 ng/mL.