

HUMAN CLEC14A PROTEIN, HIS TAG**Cat.#:** 11400**Product Name:** Human CLEC14A Protein**Size:** 10 µg, 50 µg and 100 µg**Synonyms:** C14orf27;CEG1;EGFR-5**Target:** CLEC14A**UNIPROT ID:** Q86T13**Description:** Recombinant human CLEC14A protein with C-terminal 6xHis tag**Background:** This gene encodes a member of the C-type lectin/C-type lectin-like domain (CTL/CTLD) superfamily. Members of this family share a common protein fold and have diverse functions, such as cell adhesion, cell-cell signalling, glycoprotein turnover, and roles in inflammation and immune response. This family member plays a role in cell-cell adhesion and angiogenesis. It functions in filopodia formation, cell migration and tube formation. Due to its presence at higher levels in tumor endothelium than in normal tissue endothelium, it is considered to be a candidate for tumor vascular targeting. [provided by RefSeq, Jan 2012]**Species/Host:** HEK293**Molecular Weight:** The protein has a predicted molecular mass of 40.7 kDa after removal of the signal peptide. The apparent molecular mass of CLEC14A-His is approximately 70-100 kDa due to glycosylation.**Molecular Characterization:** CLEC14A(Glu22-Ala397) 6xHis tag**Purity:** The purity of the protein is greater than 95% as determined by SDS-PAGE and Coomassie blue staining.**Formulation & Reconstitution:** Lyophilized from nanodisc solubilization buffer (20 mM Tris-HCl, 150 mM NaCl, pH 8.0). Normally 5% – 8% trehalose is added as protectants before lyophilization.**Storage & Shipping:** Store at -20°C to -80°C for 12 months in lyophilized form. After reconstitution, if not intended for use within a month, aliquot and store at -80°C (Avoid repeated freezing and thawing). Lyophilized proteins are shipped at ambient temperature.

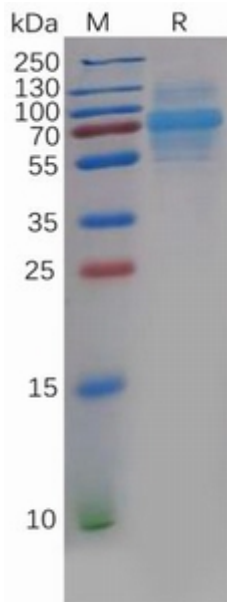


Figure 1. Human CLEC14A Protein, His Tag on SDS-PAGE under reducing condition.