

HUMAN CLEC2D PROTEIN, HIS TAG**Cat.#:** 11529**Product Name:** Human CLEC2D Protein**Size:** 10 µg, 50 µg and 100 µg**Synonyms:** C-type lectin domain family 2 member D;ectin-like NK cell receptor;LT-1;steoclast inhibitory lectin**Target:** CLEC2D**UNIPROT ID:** Q9UHP7**Description:** Recombinant human CLEC2D protein with C-terminal 6xHis tag**Background:** This gene encodes a member of the natural killer cell receptor C-type lectin family. The encoded protein inhibits osteoclast formation and contains a transmembrane domain near the N-terminus as well as the C-type lectin-like extracellular domain. Several alternatively spliced transcript variants have been identified for this gene. [provided by RefSeq, Oct 2010]**Species/Host:** HEK293**Molecular Weight:** The protein has a predicted molecular mass of 16.2 kDa after removal of the signal peptide. The apparent molecular mass of CLEC2D-His is approximately 15-25 kDa due to glycosylation.**Molecular Characterization:** CLEC2D(Arg60-Val191) 6xHis tag**Purity:** The purity of the protein is greater than 85% as determined by SDS-PAGE and Coomassie blue staining.**Formulation & Reconstitution:** Lyophilized from nanodisc solubilization buffer (20 mM Tris-HCl, 150 mM NaCl, pH 8.0). Normally 5% – 8% trehalose is added as protectants before lyophilization.**Storage & Shipping:** Store at -20°C to -80°C for 12 months in lyophilized form. After reconstitution, if not intended for use within a month, aliquot and store at -80°C (Avoid repeated freezing and thawing). Lyophilized proteins are shipped at ambient temperature.

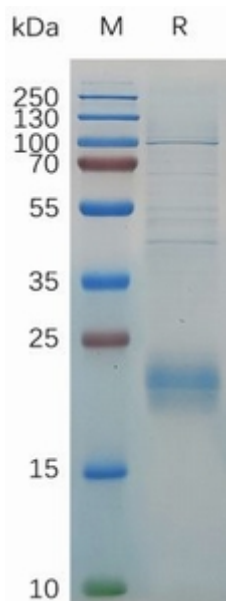


Figure 1. Human CLEC2D Protein, His Tag on SDS-PAGE under reducing condition.