

HUMAN CLEC2D PROTEIN, N-HIS TAG

Cat.#: 11244

Product Name: Human CLEC2D Protein

Size: 10 µg, 50 µg and 100 µg

Synonyms: CLAX;LLT1;OCIL

Target: CLEC2D

UNIPROT ID: Q9UHP7

Description: Recombinant Human CLEC2D Protein with N-terminal 6xHis tag

Background: This gene encodes a member of the natural killer cell receptor C-type lectin family. The encoded protein inhibits osteoclast formation and contains a transmembrane domain near the N-terminus as well as the C-type lectin-like extracellular domain. Several alternatively spliced transcript variants have been identified for this gene. [provided by RefSeq, Oct 2010]

Species/Host: HEK293

Molecular Weight: The protein has a predicted molecular mass of 16.2 kDa after removal of the signal peptide. The apparent molecular mass of His-CLEC2D is approximately 15-25 kDa due to glycosylation.

Molecular Characterization: 6×His CLEC2D(Arg60-Val191)

Purity: The purity of the protein is greater than 90% as determined by SDS-PAGE and Coomassie blue staining.

Formulation & Reconstitution: Lyophilized from nanodisc solubilization buffer (20 mM Tris-HCl, 150 mM NaCl, pH 8.0). Normally 5% – 8% trehalose is added as protectants before lyophilization.

Storage & Shipping: Store at -20°C to -80°C for 12 months in lyophilized form. After reconstitution, if not intended for use within a month, aliquot and store at -80°C (Avoid repeated freezing and thawing). Lyophilized proteins are shipped at ambient temperature.

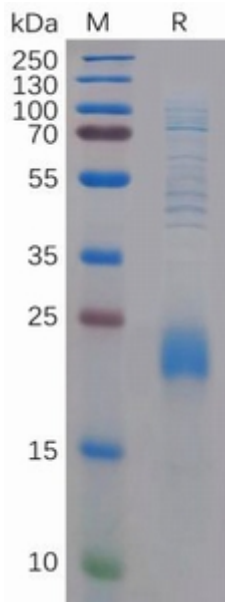


Figure 1. Human CLEC2D Protein, N-His Tag on SDS-PAGE under reducing condition.