

HUMAN CLEC4C PROTEIN, HIS TAG**Cat.#:** 11966**Product Name:** Human CLEC4C Protein**Size:** 10 µg, 50 µg and 100 µg**Synonyms:** BDCA-2;CD303**Target:** CLEC4C**UNIPROT ID:** Q8WTT0**Description:** Recombinant Human CLEC4C Protein with C-terminal 6XHis tag**Background:** This gene encodes a member of the C-type lectin/C-type lectin-like domain (CTL/CTLD) superfamily. Members of this family share a common protein fold and have diverse functions, such as cell adhesion, cell-cell signalling, glycoprotein turnover, and roles in inflammation and immune response. The encoded type 2 transmembrane protein may play a role in dendritic cell function. Two transcript variants encoding distinct isoforms have been identified for this gene. [provided by RefSeq, Jul 2008]**Species/Host:** HEK293**Molecular Weight:** The protein has a predicted molecular mass of 20.8 kDa after removal of the signal peptide. The apparent molecular mass of CLEC4C-His is approximately 25-35 kDa due to glycosylation.**Molecular Characterization:** CLEC4C(Asn45-Ile213) 6×His tag**Purity:** The purity of the protein is greater than 85% as determined by SDS-PAGE and Coomassie blue staining.**Formulation & Reconstitution:** Lyophilized from nanodisc solubilization buffer (20 mM Tris-HCl, 150 mM NaCl, pH 8.0). Normally 5% – 8% trehalose is added as protectants before lyophilization.**Storage & Shipping:** Store at -20°C to -80°C for 12 months in lyophilized form. After reconstitution, if not intended for use within a month, aliquot and store at -80°C (Avoid repeated freezing and thawing). Lyophilized proteins are shipped at ambient temperature.

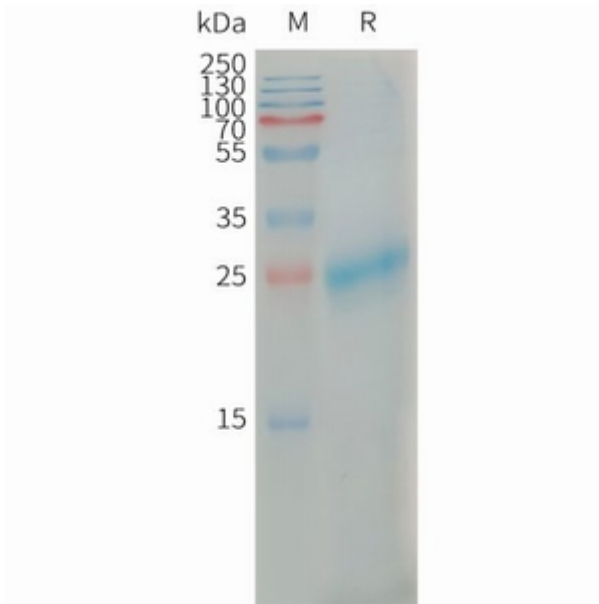


Figure 1. Human CLEC4C Protein, His Tag on SDS-PAGE under reducing condition.