

**HUMAN CLEC5A PROTEIN, HFC TAG****Cat.#:** 11969**Product Name:** Human CLEC5A Protein**Size:** 10 µg, 50 µg and 100 µg**Synonyms:** CLECSF5;MDL-1;MDL1**Target:** CLEC5A**UNIPROT ID:** Q9NY25**Description:** Recombinant Human CLEC5A Protein with N-terminal human Fc tag**Background:** This gene encodes a member of the C-type lectin/C-type lectin-like domain (CTL/CTLD) superfamily. Members of this family share a common protein fold and have diverse functions, such as cell adhesion, cell-cell signalling, glycoprotein turnover, and roles in inflammation and immune response. The encoded type II transmembrane protein interacts with dnax-activation protein 12 and may play a role in cell activation. Alternative splice variants have been described but their full-length sequence has not been determined. [provided by RefSeq, Jul 2008]**Species/Host:** HEK293**Molecular Weight:** The protein has a predicted molecular mass of 44.5 kDa after removal of the signal peptide. The apparent molecular mass of hFc-CLEC5A is approximately 55-70 kDa due to glycosylation.**Molecular Characterization:** hFc(Glu99-Ala330) CLEC5A(Pro28-Lys188)**Purity:** The purity of the protein is greater than 95% as determined by SDS-PAGE and Coomassie blue staining.**Formulation & Reconstitution:** Lyophilized from nanodisc solubilization buffer (20 mM Tris-HCl, 150 mM NaCl, pH 8.0). Normally 5% – 8% trehalose is added as protectants before lyophilization.**Storage & Shipping:** Store at -20°C to -80°C for 12 months in lyophilized form. After reconstitution, if not intended for use within a month, aliquot and store at -80°C (Avoid repeated freezing and thawing). Lyophilized proteins are shipped at ambient temperature.

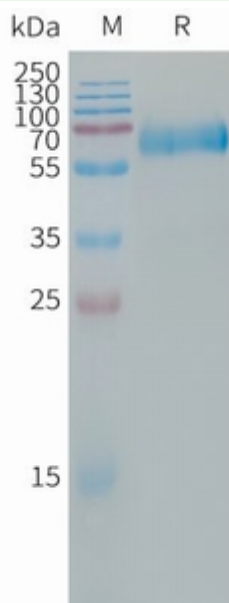


Figure 1. Human CLEC5A Protein, hFc Tag on SDS-PAGE under reducing condition.