

HUMAN CPM PROTEIN, HIS TAG**Cat.#:** 11933**Product Name:** Human CPM Protein**Size:** 10 µg, 50 µg and 100 µg**Synonyms:** CBPM**Target:** CPM**UNIPROT ID:** P14384**Description:** Recombinant Human CPM Protein with C-terminal 6xHis tag**Background:** The protein encoded by this gene is a membrane-bound arginine/lysine carboxypeptidase. Its expression is associated with monocyte to macrophage differentiation. This encoded protein contains hydrophobic regions at the amino and carboxy termini and has 6 potential asparagine-linked glycosylation sites. The active site residues of carboxypeptidases A and B are conserved in this protein. Three alternatively spliced transcript variants encoding the same protein have been described for this gene. [provided by RefSeq, Jul 2008]**Species/Host:** HEK293**Molecular Weight:** The protein has a predicted molecular mass of 47.1 kDa after removal of the signal peptide. The apparent molecular mass of CPM-His is approximately 35–55 kDa due to glycosylation.**Molecular Characterization:** CPM(Leu18-His422) 6×His tag**Purity:** The purity of the protein is greater than 85% as determined by SDS-PAGE and Coomassie blue staining.**Formulation & Reconstitution:** Lyophilized from nanodisc solubilization buffer (20 mM Tris-HCl, 150 mM NaCl, pH 8.0). Normally 5% – 8% trehalose is added as protectants before lyophilization.**Storage & Shipping:** Store at –20°C to –80°C for 12 months in lyophilized form. After reconstitution, if not intended for use within a month, aliquot and store at –80°C (Avoid repeated freezing and thawing). Lyophilized proteins are shipped at ambient temperature.

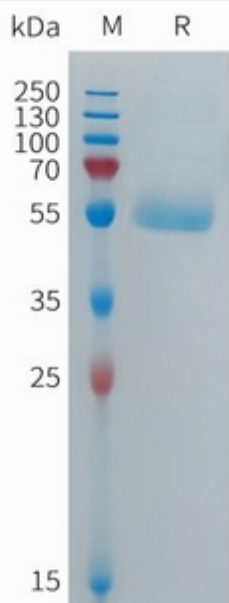


Figure 1. Human CPM Protein, His Tag on SDS-PAGE under reducing condition.