

**HUMAN CXCL5 PROTEIN****Cat.#:** 12072**Product Name:** Human CXCL5 Protein**Size:** 10 µg, 50 µg and 100 µg**Synonyms:** C-X-C Motif Chemokine 5;ENA-78 (1-78);Epithelial-Derived Neutrophil-Activating Protein 78;Neutrophil-Activating Peptide ENA-78;Small-Inducible Cytokine B5;ENA-78 (8-78);ENA-78 (9-78);CXCL5;ENA78;SCYB5**Target:** CXCL5**UNIPROT ID:** P42830**Description:** Recombinant Human C-X-C Motif Chemokine 5 is produced by our E.coli expression system and the target gene encoding Leu44-Asn114 is expressed.**Background:** C-X-C Motif Chemokine 5 (CXCL5) is a member of the Interkrine Alpha (Chemokine CXC) family. CXCL5 can be cleaved into the following two chains, ENA-78 (8-78) and ENA-78 (9-78). In vitro, ENA-78(8-78) and ENA-78 (9-78) show a threefold higher chemotactic activity for neutrophil granulocytes. CXCL5 is a secreted protein and exercises the functions primarily through interactions with CXCR2. The upregulation of CXCL5 contributes to increased vascularization, tumor grown, and metastasis in many cancers.**Species/Host:** E.coli**Molecular Weight:** 7.95 KDa**Molecular Characterization:** Not available**Purity:** Greater than 95% as determined by reducing SDS-PAGE.**Formulation & Reconstitution:** Lyophilized from nanodisc solubilization buffer (20 mM Tris-HCl, 150 mM NaCl, pH 8.0). Normally 5% – 8% trehalose is added as protectants before lyophilization.**Storage & Shipping:** Store at -20°C to -80°C for 12 months in lyophilized form. After reconstitution, if not intended for use within a month, aliquot and store at -80°C (Avoid repeated freezing and thawing). Lyophilized proteins are shipped at ambient temperature.

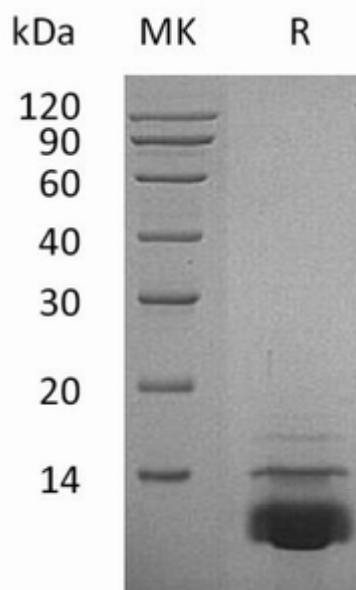


Figure 1. Greater than 95% as determined by reducing SDS-PAGE.