

## HUMAN CXCR3 PROTEIN, HFC TAG

**Cat.#:** 11614

**Product Name:** Human CXCR3 Protein

**Size :** 10 µg, 50 µg and 100 µg

**Synonyms:** CD182;CD183;CKR-L2;CMKAR3;GPR9;IP10-R;Mig-R;MigR

**Target:** CXCR3

**UNIPROT ID:** P49682

**Description:** Recombinant Human CXCR3 with C-terminal human Fc tag

**Background:** This gene encodes a G protein-coupled receptor with selectivity for three chemokines, termed CXCL9/Mig (monokine induced by interferon- $\gamma$ ), CXCL10/IP10 (interferon- $\gamma$ -inducible 10 kDa protein) and CXCL11/I-TAC (interferon-inducible T cell  $\alpha$ -chemoattractant). Binding of chemokines to this protein induces cellular responses that are involved in leukocyte traffic, most notably integrin activation, cytoskeletal changes and chemotactic migration. Alternatively spliced transcript variants encoding different isoforms have been found for this gene. One of the isoforms (CXCR3-B) shows high affinity binding to chemokine, CXCL4/PF4 (PMID:12782716). [provided by RefSeq, Jun 2011]

**Species/Host:** HEK293

**Molecular Weight:** The protein has a predicted molecular mass of 32.0 kDa after removal of the signal peptide. The apparent molecular mass of CXCR3-hFc is approximately 35-55 kDa due to glycosylation.

**Molecular Characterization:** CXCR3(Met1-Arg53) hFc(Glu99-Ala330)

**Purity:** The purity of the protein is greater than 95% as determined by SDS-PAGE and Coomassie blue staining.

**Formulation & Reconstitution:** Lyophilized from nanodisc solubilization buffer (20 mM Tris-HCl, 150 mM NaCl, pH 8.0). Normally 5% – 8% trehalose is added as protectants before lyophilization.

**Storage & Shipping:** Store at  $-20^{\circ}\text{C}$  to  $-80^{\circ}\text{C}$  for 12 months in lyophilized form. After reconstitution, if not intended for use within a month, aliquot and store at  $-80^{\circ}\text{C}$  (Avoid repeated freezing and thawing). Lyophilized proteins are shipped at ambient temperature.

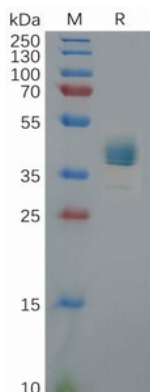


Figure 1. Human CXCR3 Protein, hFc Tag on SDS-PAGE under reducing condition.

### Human CXCR3,hFc Tagged protein ELISA

0.2 µg of Human CXCR3, hFc tagged protein per well

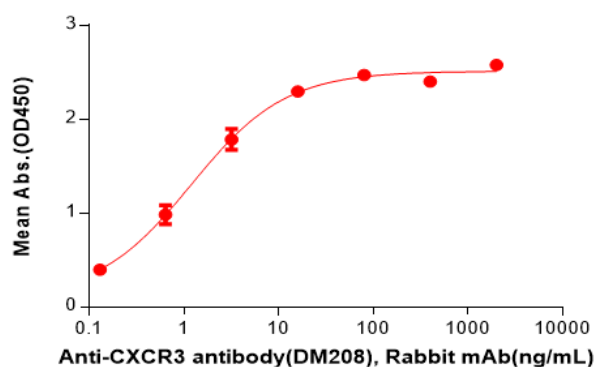


Figure 2. ELISA plate pre-coated by 2 µg/ml (100 µl/well) Human CXCR3 Protein, hFc Tag(11614) can bind Anti-CXCR3 antibody(DM208), Rabbit mAb in a linear range of 0.13-3.20 ng/mL.