

HUMAN EVA1C PROTEIN, HFC TAG

Cat.#: 11409

Product Name: Human EVA1C Protein

Size: 10 µg, 50 µg and 100 µg

Synonyms: B18;B19;C21orf63;C21orf64;FAM176C;PRED34;SUE21

Target: EVA1C

UNIPROT ID: P58658

Description: Recombinant Human EVA1C with C-terminal human Fc tag

Background: EVA1C (aliases C21orf63), first identified in 2001, is a membrane protein encoding-gene. EVA1C protein has been found in a variety of human tissues. Kanae Mitsunaga identified EVA1C protein possessing two repeats of putative 'galactose-binding lectin domains' that bind heparin. Although the role of EVA1C has not been reported in tumor, Manas Kotepui et al. reported that ADGRL3 (LPHN3), an important paralog of EVA1C gene, was upregulated in breast cancer and was correlated with axillary lymph node metastasis.

Species/Host: HEK293

Molecular Weight: The protein has a predicted molecular mass of 56.6 kDa after removal of the signal peptide. The apparent molecular mass of EVA1C-hFc is approximately 55-70 kDa due to glycosylation.

Molecular Characterization: EVA1C(Leu49-Glu320) hFc(Glu99-Ala330)

Purity: The purity of the protein is greater than 95% as determined by SDS-PAGE and Coomassie blue staining.

Formulation & Reconstitution: Lyophilized from nanodisc solubilization buffer (20 mM Tris-HCl, 150 mM NaCl, pH 8.0). Normally 5% – 8% trehalose is added as protectants before lyophilization.

Storage & Shipping: Store at -20°C to -80°C for 12 months in lyophilized form. After reconstitution, if not intended for use within a month, aliquot and store at -80°C (Avoid repeated freezing and thawing). Lyophilized proteins are shipped at ambient temperature.

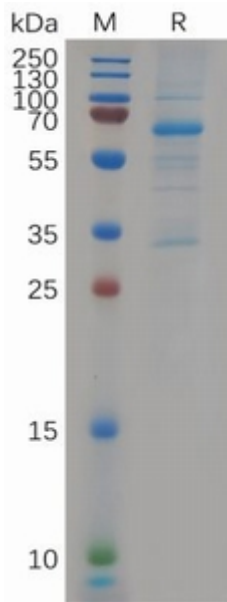


Figure 1. Human EVA1C Protein, hFc Tag on SDS-PAGE under reducing condition.