

HUMAN FOLR2 PROTEIN, HFC TAG

Cat.#: 11644

Product Name: Human FOLR2 Protein

Size: 10 µg, 50 µg and 100 µg

Synonyms: BETA-HFR;FBP;FBP/PL-1;FOLR1;FR-BETA;FR-P3;FRbeta

Target: FOLR2

UNIPROT ID: P14207

Description: Recombinant Human FOLR2 with C-terminal human Fc tag

Background: The protein encoded by this gene is a member of the folate receptor (FOLR) family, and these genes exist in a cluster on chromosome 11. Members of this gene family have a high affinity for folic acid and for several reduced folic acid derivatives, and they mediate delivery of 5-methyltetrahydrofolate to the interior of cells. This protein has a 68% and 79% sequence homology with the FOLR1 and FOLR3 proteins, respectively. Although this protein was originally thought to be specific to placenta, it can also exist in other tissues, and it may play a role in the transport of methotrexate in synovial macrophages in rheumatoid arthritis patients. Multiple transcript variants that encode the same protein have been found for this gene. [provided by RefSeq, Jul 2008]

Species/Host: HEK293

Molecular Weight: The protein has a predicted molecular mass of 50.7 kDa after removal of the signal peptide. The apparent molecular mass of FOLR2-hFc is approximately 55-70 kDa due to glycosylation.

Molecular Characterization: FOLR2(Thr17-His228) hFc(Glu99-Ala330)

Purity: The purity of the protein is greater than 95% as determined by SDS-PAGE and Coomassie blue staining.

Formulation & Reconstitution: Lyophilized from nanodisc solubilization buffer (20 mM Tris-HCl, 150 mM NaCl, pH 8.0). Normally 5% – 8% trehalose is added as protectants before lyophilization.

Storage & Shipping: Store at -20°C to -80°C for 12 months in lyophilized form. After reconstitution, if not intended for use within a month, aliquot and store at -80°C (Avoid repeated freezing and thawing). Lyophilized proteins are shipped at ambient temperature.

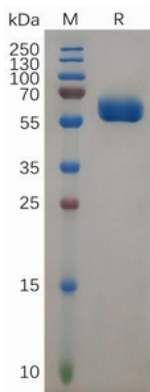


Figure 1. Human FOLR2 Protein, hFc Tag on SDS-PAGE under reducing condition.

Human FOLR2,hFc Tagged protein ELISA

0.2 µg of Human FOLR2, hFc tagged protein per well

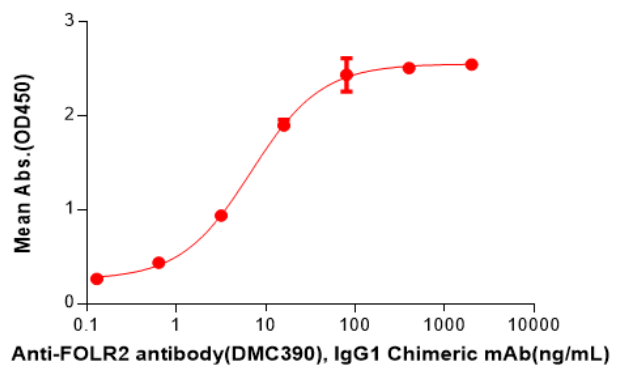


Figure 2. ELISA plate pre-coated by 2 µg/ml (100 µl/well) Human FOLR2 Protein, hFc Tag(11644) can bind Anti-FOLR2 antibody(DMC390), IgG1 Chimeric mAb in a linear range of 0.64-16 ng/mL.