

HUMAN GAS6 PROTEIN, HIS TAG

Cat.#: 11415

Product Name: Human GAS6 Protein

Size: 10 µg, 50 µg and 100 µg

Synonyms: AXLLG;AXSF

Target: GAS6

UNIPROT ID: Q14393

Description: Recombinant human GAS6 protein with C-terminal 6xHis tag

Background: This gene encodes a gamma-carboxyglutamic acid (Gla)-containing protein thought to be involved in the stimulation of cell proliferation. This gene is frequently overexpressed in many cancers and has been implicated as an adverse prognostic marker. Elevated protein levels are additionally associated with a variety of disease states, including venous thromboembolic disease, systemic lupus erythematosus, chronic renal failure, and preeclampsia. [provided by RefSeq, Aug 2014]

Species/Host: HEK293

Molecular Weight: The protein has a predicted molecular mass of 72.7 kDa after removal of the signal peptide. The apparent molecular mass of GAS6-His is approximately 70-100 kDa due to glycosylation.

Molecular Characterization: GAS6(Ala31-Ala678) 6xHis tag

Purity: The purity of the protein is greater than 85% as determined by SDS-PAGE and Coomassie blue staining.

Formulation & Reconstitution: Lyophilized from nanodisc solubilization buffer (20 mM Tris-HCl, 150 mM NaCl, pH 8.0). Normally 5% – 8% trehalose is added as protectants before lyophilization.

Storage & Shipping: Store at -20°C to -80°C for 12 months in lyophilized form. After reconstitution, if not intended for use within a month, aliquot and store at -80°C (Avoid repeated freezing and thawing). Lyophilized proteins are shipped at ambient temperature.

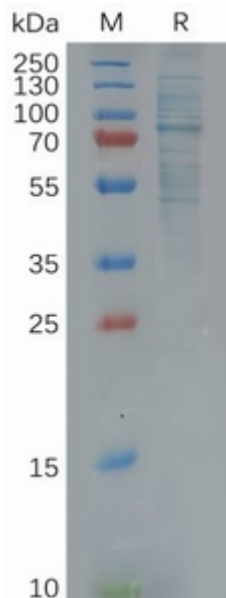


Figure 1. Human GAS6 Protein, His Tag on SDS-PAGE under reducing condition.

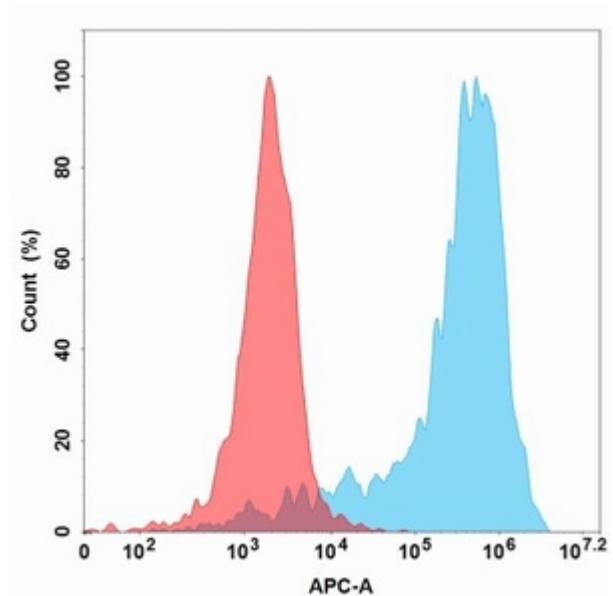


Figure 2. Flow cytometry analysis with 15 $\mu\text{g}/\text{ml}$ Human GAS6 Protein, His Tag (11415) on Expi293 cells transfected with Human AXL protein (Blue histogram) or Expi293 transfected with irrelevant protein (Red histogram).