

HUMAN GDF15 PROTEIN, HFC TAG

Cat.#: 11424

Product Name: Human GDF15 Protein

Size: 10 µg, 50 µg and 100 µg

Synonyms: GDF-15;MIC-1;MIC1;NAG-1;PDF;PLAB;PTGFB

Target: GDF15

UNIPROT ID: Q99988

Description: Recombinant Human GDF15 Protein with N-terminal human Fc tag

Background: This gene encodes a secreted ligand of the TGF-beta (transforming growth factor-beta) superfamily of proteins. Ligands of this family bind various TGF-beta receptors leading to recruitment and activation of SMAD family transcription factors that regulate gene expression. The encoded preproprotein is proteolytically processed to generate each subunit of the disulfide-linked homodimer. The protein is expressed in a broad range of cell types, acts as a pleiotropic cytokine and is involved in the stress response program of cells after cellular injury. Increased protein levels are associated with disease states such as tissue hypoxia, inflammation, acute injury and oxidative stress. [provided by RefSeq, Aug 2016]

Species/Host: HEK293

Molecular Weight: The protein has a predicted molecular mass of 38.4 kDa after removal of the signal peptide. The apparent molecular mass of hFc-GDF15 is approximately 35-55 kDa due to glycosylation.

Molecular Characterization: hFc(Glu99-Ala330) GDF15(Ala197-Ile308)

Purity: The purity of the protein is greater than 95% as determined by SDS-PAGE and Coomassie blue staining.

Formulation & Reconstitution: Lyophilized from nanodisc solubilization buffer (20 mM Tris-HCl, 150 mM NaCl, pH 8.0). Normally 5% - 8% trehalose is added as protectants before lyophilization.

Storage & Shipping: Store at -20°C to -80°C for 12 months in lyophilized form. After reconstitution, if not intended for use within a month, aliquot and store at -80°C (Avoid repeated freezing and thawing). Lyophilized proteins are shipped at ambient temperature.

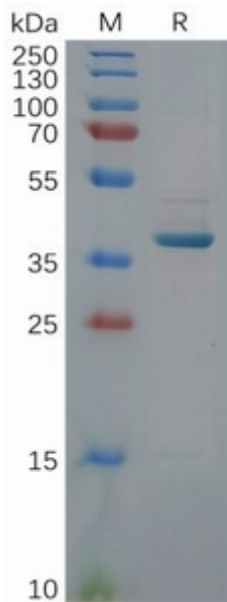


Figure 1. Human GDF15 Protein, hFc Tag on SDS-PAGE under reducing condition.