

HUMAN GIPR PROTEIN, HFC TAG

Cat.#: 11924

Product Name: Human GIPR Protein

Size: 10 µg, 50 µg and 100 µg

Synonyms: PGQTL2

Target: GIPR

UNIPROT ID: P48546

Description: Recombinant Human GIPR Protein with C-terminal human Fc tag

Background: This gene encodes a G-protein coupled receptor for gastric inhibitory polypeptide (GIP), which was originally identified as an activity in gut extracts that inhibited gastric acid secretion and gastrin release, but subsequently was demonstrated to stimulate insulin release in the presence of elevated glucose. Mice lacking this gene exhibit higher blood glucose levels with impaired initial insulin response after oral glucose load. Defect in this gene thus may contribute to the pathogenesis of diabetes. [provided by RefSeq, Oct 2011]

Species/Host: HEK293

Molecular Weight: The protein has a predicted molecular mass of 39.6 kDa after removal of the signal peptide. The apparent molecular mass of GIPR-hFc is approximately 35-55 kDa due to glycosylation.

Molecular Characterization: GIPR(Arg22-Gln138) hFc(Glu99-Ala330)

Purity: The purity of the protein is greater than 95% as determined by SDS-PAGE and Coomassie blue staining.

Formulation & Reconstitution: Lyophilized from nanodisc solubilization buffer (20 mM Tris-HCl, 150 mM NaCl, pH 8.0). Normally 5% – 8% trehalose is added as protectants before lyophilization.

Storage & Shipping: Store at -20°C to -80°C for 12 months in lyophilized form. After reconstitution, if not intended for use within a month, aliquot and store at -80°C (Avoid repeated freezing and thawing). Lyophilized proteins are shipped at ambient temperature.

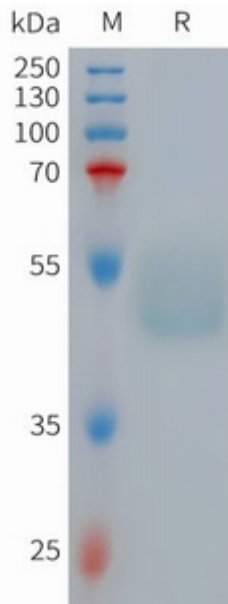


Figure 1. Human GIPR Protein, hFc Tag on SDS-PAGE under reducing condition.