

## HUMAN GM-CSFR PROTEIN, HFC TAG

**Cat.#:** 11676

**Product Name:** Human GM-CSFR Protein

**Size:** 10 µg, 50 µg and 100 µg

**Synonyms:** alphaGMR;CD116;CDw116;CSF2R;CSF2RAX;CSF2RAY;CSF2RX;CSF2RY;GM-CSF-R-alpha;GMCSFR;GMCSFR-alpha;GMR;GMR-alpha;SMDP4

**Target:** GM-CSFR

**UNIPROT ID:** P15509

**Description:** Recombinant Human GM-CSFR Protein with C-terminal human Fc tag

**Background:** The protein encoded by this gene is the alpha subunit of the heterodimeric receptor for colony stimulating factor 2, a cytokine which controls the production, differentiation, and function of granulocytes and macrophages. The encoded protein is a member of the cytokine family of receptors. This gene is found in the pseudoautosomal region (PAR) of the X and Y chromosomes. Multiple transcript variants encoding different isoforms have been found for this gene, with some of the isoforms being membrane-bound and others being soluble. [provided by RefSeq, Jul 2008]

**Species/Host:** HEK293

**Molecular Weight:** The protein has a predicted molecular mass of 60.6 kDa after removal of the signal peptide. The apparent molecular mass of GM-CSFR-hFc is approximately 70–130 kDa due to glycosylation.

**Molecular Characterization:** GM-CSFR(Glu23–Gly320) hFc(Glu99–Ala330)

**Purity:** The purity of the protein is greater than 95% as determined by SDS-PAGE and Coomassie blue staining.

**Formulation & Reconstitution:** Lyophilized from nanodisc solubilization buffer (20 mM Tris-HCl, 150 mM NaCl, pH 8.0). Normally 5% – 8% trehalose is added as protectants before lyophilization.

**Storage & Shipping:** Store at –20°C to –80°C for 12 months in lyophilized form. After reconstitution, if not intended for use within a month, aliquot and store at –80°C (Avoid repeated freezing and thawing). Lyophilized proteins are shipped at ambient temperature.

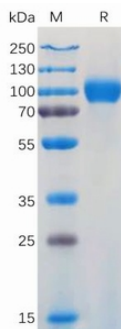


Figure 1. Human GM-CSFR Protein, hFc Tag on SDS-PAGE under reducing condition.