

**HUMAN GPC1 PROTEIN, HIS TAG****Cat.#:** 11751**Product Name:** Human GPC1 Protein**Size:** 10 µg, 50 µg and 100 µg**Synonyms:** Glypican 1;PC1**Target:** GPC1**UNIPROT ID:** P35052**Description:** Recombinant human GPC1 protein with C-terminal 7xHis tag

**Background:** Cell surface heparan sulfate proteoglycans are composed of a membrane-associated protein core substituted with a variable number of heparan sulfate chains. Members of the glypican-related integral membrane proteoglycan family (GRIPS) contain a core protein anchored to the cytoplasmic membrane via a glycosyl phosphatidylinositol linkage. These proteins may play a role in the control of cell division and growth regulation. [provided by RefSeq, Jul 2008]

**Species/Host:** HEK293

**Molecular Weight:** The protein has a predicted molecular mass of 57.0 kDa after removal of the signal peptide. The apparent molecular mass of GPC1-His is approximately 55–70 kDa due to glycosylation.

**Molecular Characterization:** GPC1(Asp24–Ser530) 7×His tag

**Purity:** The purity of the protein is greater than 85% as determined by SDS-PAGE and Coomassie blue staining.

**Formulation & Reconstitution:** Lyophilized from nanodisc solubilization buffer (20 mM Tris-HCl, 150 mM NaCl, pH 8.0). Normally 5% – 8% trehalose is added as protectants before lyophilization.

**Storage & Shipping:** Store at –20°C to –80°C for 12 months in lyophilized form. After reconstitution, if not intended for use within a month, aliquot and store at –80°C (Avoid repeated freezing and thawing). Lyophilized proteins are shipped at ambient temperature.

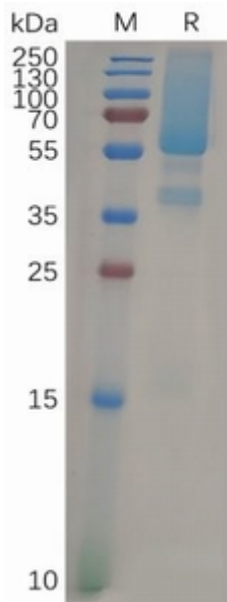


Figure 1. Human GPC1 Protein, His Tag on SDS-PAGE under reducing condition.