

## HUMAN GPRC5D PROTEIN, HFC TAG

**Cat.#:** 11473

**Product Name:** Human GPRC5D Protein

**Size:** 10 µg, 50 µg and 100 µg

**Synonyms:** GPRC5D

**Target:** GPRC5D

**UNIPROT ID:** Q9NZD1

**Description:** Recombinant human GPRC5D protein with C-terminal human Fc tag

**Background:** The protein encoded by this gene is a member of the G protein-coupled receptor family, however, the specific function of this gene has not yet been determined.

**Species/Host:** HEK293

**Molecular Weight:** The protein has a predicted molecular mass of 28.4 kDa after removal of the signal peptide. The apparent molecular mass of GPRC5D-hFc is approximately 25-35 kDa due to glycosylation.

**Molecular Characterization:** GPRC5D(Met1-Glu27) hFc(Glu99-Ala330)

**Purity:** The purity of the protein is greater than 95% as determined by SDS-PAGE and Coomassie blue staining.

**Formulation & Reconstitution:** Lyophilized from nanodisc solubilization buffer (20 mM Tris-HCl, 150 mM NaCl, pH 8.0). Normally 5% – 8% trehalose is added as protectants before lyophilization.

**Storage & Shipping:** Store at -20°C to -80°C for 12 months in lyophilized form. After reconstitution, if not intended for use within a month, aliquot and store at -80°C (Avoid repeated freezing and thawing). Lyophilized proteins are shipped at ambient temperature.

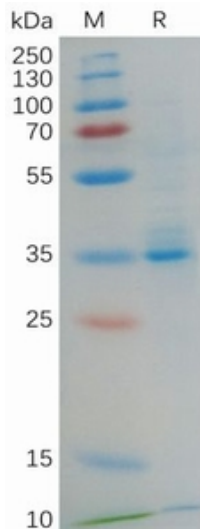


Figure 1. Human GPRC5D Protein, hFc Tag on SDS-PAGE under reducing condition.

## Human GPRC5D, hFc Tagged protein ELISA

0.2  $\mu$ g of Human GPRC5D, hFc tagged protein per well

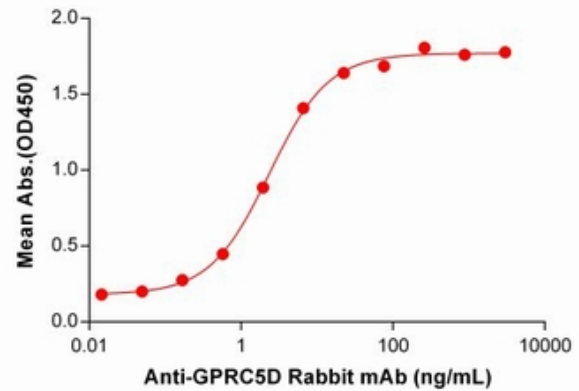


Figure 2. ELISA plate pre-coated by 2  $\mu$ g/ml (100  $\mu$ l/well) Human GPRC5D Protein, hFc Tag (11473) can bind Anti-GPRC5D antibody (DM91), Rabbit mAb 28423 in a linear range of 0.17–22.45 ng/mL.