

## HUMAN HVEM PROTEIN, HIS TAG

**Cat.#:** 11253

**Product Name:** Human HVEM Protein

**Size:** 10 µg, 50 µg and 100 µg

**Synonyms:** ATAR;CD270;HVEA;HVEM;LIGHTR;TR2

**Target:** HVEM

**UNIPROT ID:** Q92956

**Description:** Recombinant Human HVEM Protein with C-terminal 6xHis tag

**Background:** This gene encodes a member of the TNF (tumor necrosis factor) receptor superfamily. The encoded protein functions in signal transduction pathways that activate inflammatory and inhibitory T-cell immune response. It binds herpes simplex virus (HSV) viral envelope glycoprotein D (gD), mediating its entry into cells. Alternative splicing results in multiple transcript variants.

**Species/Host:** HEK293

**Molecular Weight:** The protein has a predicted molecular mass of 18.2 kDa after removal of the signal peptide. The apparent molecular mass of HVEM-His is approximately 25–55 kDa due to glycosylation.

**Molecular Characterization:** HVEM(Leu39–Val202) 6xHis tag

**Purity:** The purity of the protein is greater than 95% as determined by SDS-PAGE and Coomassie blue staining.

**Formulation & Reconstitution:** Lyophilized from nanodisc solubilization buffer (20 mM Tris-HCl, 150 mM NaCl, pH 8.0). Normally 5% – 8% trehalose is added as protectants before lyophilization.

**Storage & Shipping:** Store at –20°C to –80°C for 12 months in lyophilized form. After reconstitution, if not intended for use within a month, aliquot and store at –80°C (Avoid repeated freezing and thawing). Lyophilized proteins are shipped at ambient temperature.

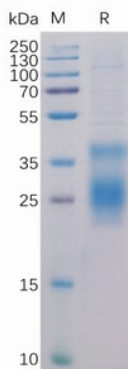


Figure 1. Human HVEM Protein, His Tag on SDS-PAGE under reducing condition.

## Human HVEM, His Tagged protein ELISA

0.2  $\mu$ g of HVEM, His Tagged protein per well

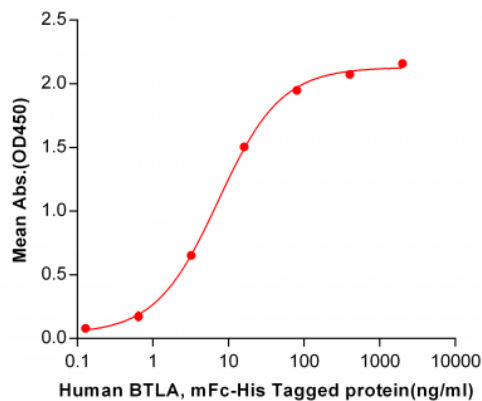


Figure 2. ELISA plate pre-coated by 2  $\mu$ g/ml (100  $\mu$ l/well) Human HVEM, His tagged protein (11253) can bind Human BTLA, mFc-His tagged protein 11174 in a linear range of 0.64-80 ng/ml.

## Human HVEM, His Tagged protein ELISA

0.2  $\mu$ g of HVEM, His Tagged protein per well

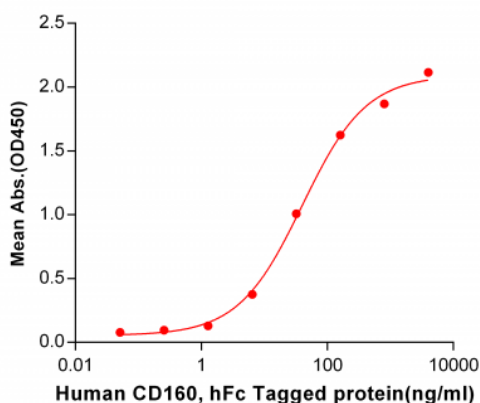


Figure 3. ELISA plate pre-coated by 2  $\mu$ g/ml (100  $\mu$ l/well) Human HVEM, His tagged protein (11253) can bind Human CD160, hFc tagged protein 11179 in a linear range of 1.28-160 ng/ml.

## Human HVEM, His Tagged protein ELISA

0.2  $\mu$ g of Human HVEM, His Tagged protein per well

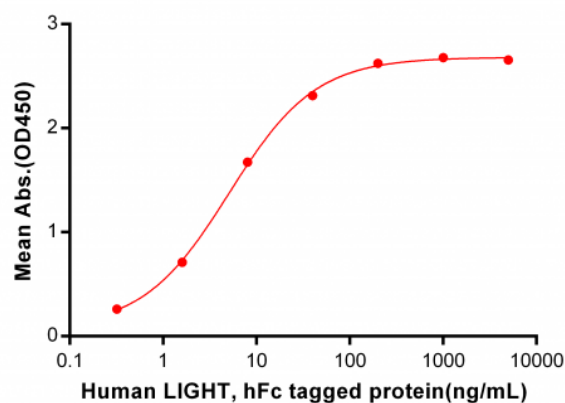


Figure 4. ELISA plate pre-coated by 2  $\mu$ g/ml (100  $\mu$ l/well) Human HVEM, His tagged protein (11253) can bind Human LIGHT, hFc tagged protein 11175 in a linear range of 0.32-40 ng/ml.

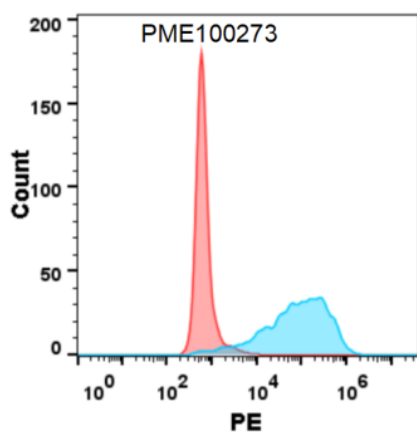


Figure 6. Flow cytometry analysis with 15  $\mu$ g/ml Human HVEM Protein, His tag (11253) on Expi293 cells transfected with human LIGHT (Blue histogram) or Expi293 transfected with irrelevant protein (Red histogram).

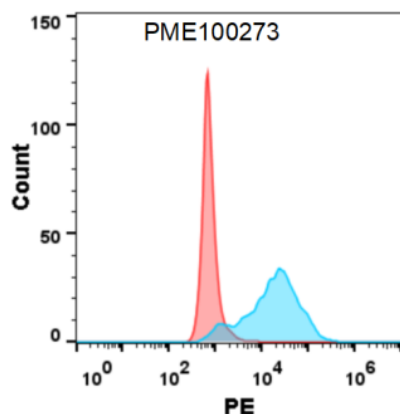


Figure 6. Flow cytometry analysis with 15  $\mu$ g/ml Human HVEM Protein, His tag (11253) on Expi293 cells transfected with human LIGHT (Blue histogram) or Expi293 transfected with irrelevant protein (Red histogram).

