

HUMAN IGG1-FC PROTEIN

Cat.#: 11303

Product Name: Human IgG1-Fc Protein

Size: 10 µg, 50 µg and 100 µg

Synonyms: IgG1 Fc Protein

Target: IgG1-Fc

UNIPROT ID: P01857

Description: Recombinant Human IgG1-Fc Protein

Background: IGHG1 (Immunoglobulin Heavy Constant Gamma 1 (G1m Marker)) is a Protein Coding gene. Diseases associated with IGHG1 include Leukemia, Chronic Lymphocytic and Heavy Chain Deposition Disease. Among its related pathways are Interleukin-4 and 13 signaling and IL4-mediated signaling events. Gene Ontology (GO) annotations related to this gene include antigen binding. An important paralog of this gene is IGHG3.

Species/Host: HEK293

Molecular Weight: The protein has a predicted molecular mass of 27.7 kDa after removal of the signal peptide. The apparent molecular mass of IgG1-Fc is approximately 30-40 kDa due to glycosylation.

Molecular Characterization: hFc(Glu99-Ala330)

Purity: The purity of the protein is greater than 95% as determined by SDS-PAGE and Coomassie blue staining.

Formulation & Reconstitution: Lyophilized from nanodisc solubilization buffer (20 mM Tris-HCl, 150 mM NaCl, pH 8.0). Normally 5% – 8% trehalose is added as protectants before lyophilization.

Storage & Shipping: Store at -20°C to -80°C for 12 months in lyophilized form. After reconstitution, if not intended for use within a month, aliquot and store at -80°C (Avoid repeated freezing and thawing). Lyophilized proteins are shipped at ambient temperature.

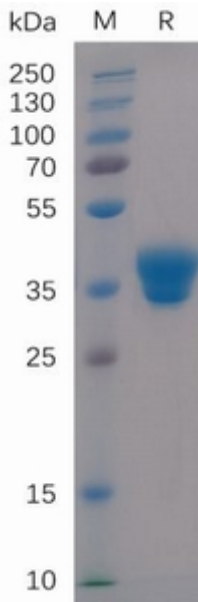


Figure 1. Human IgG1-Fc Protein on SDS-PAGE under reducing condition.