

HUMAN IGHE PROTEIN, HIS TAG

Cat.#: 11917

Product Name: Human IGHE Protein

Size: 10 µg, 50 µg and 100 µg

Synonyms: IgE

Target: IgHE

UNIPROT ID: P01854

Description: Recombinant Human IGHE Protein with C-terminal 6xHis tag

Background: Predicted to enable antigen binding activity and immunoglobulin receptor binding activity. Predicted to be involved in several processes, including activation of immune response; defense response to other organism; and phagocytosis. Predicted to be located in extracellular region. Predicted to be part of immunoglobulin complex, circulating. Predicted to be active in external side of plasma membrane. [provided by Alliance of Genome Resources, Apr 2022]

Species/Host: HEK293

Molecular Weight: The protein has a predicted molecular mass of 47.8 kDa after removal of the signal peptide.

Molecular Characterization: IGHE(Ala1-Lys428) 6×His tag

Purity: The purity of the protein is greater than 85% as determined by SDS-PAGE and Coomassie blue staining.

Formulation & Reconstitution: Lyophilized from nanodisc solubilization buffer (20 mM Tris-HCl, 150 mM NaCl, pH 8.0). Normally 5% – 8% trehalose is added as protectants before lyophilization.

Storage & Shipping: Store at -20°C to -80°C for 12 months in lyophilized form. After reconstitution, if not intended for use within a month, aliquot and store at -80°C (Avoid repeated freezing and thawing). Lyophilized proteins are shipped at ambient temperature.

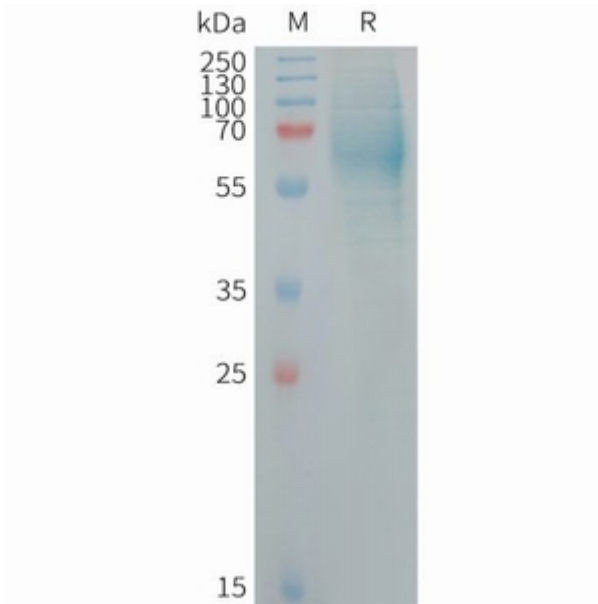


Figure 1. Human IGHE Protein, His Tag on SDS-PAGE under reducing condition.