

HUMAN IL-2 SUPERKINE (MUTANT, C-6HIS) PROTEIN

Cat.#: 12057

Product Name: Human IL-2 Superkine (Mutant)

Size: 10 µg, 50 µg and 100 µg

Synonyms: Interleukin-2;IL-2;T-Cell Growth Factor;TCGF;Aldesleukin;IL2

Target: IL-2

UNIPROT ID: P60568

Description: "Recombinant Human Interleukin-2 Superkine is produced by our Mammalian expression system and the target gene encoding Ala21-Thr153 (L100F

Background: Interleukin-2(IL-2) is an interleukin, a type of cytokine signaling molecule in the immune system,belongs to the IL-2 family. It is a powerful immunoregulatory lymphokine produced by T-cells in response to antigenic or mitogenic stimulation. IL-2/IL-2R signaling is required for T-cell proliferation and other fundamental functions that are essential for the immune response. IL-2 stimulates growth and differentiation of B-cells, NK cells, lymphokine-activated killer cells, monocytes, macrophages and oligodendrocytes. New research has shown that IL-2 mutant reduced toxicity while being more potent at stimulating anti-tumor effector immune cells.

Species/Host: HEK293

Molecular Weight: 16.5 KDa

Molecular Characterization: Not available

Purity: Greater than 95% as determined by reducing SDS-PAGE.

Formulation & Reconstitution: Lyophilized from nanodisc solubilization buffer (20 mM Tris-HCl, 150 mM NaCl, pH 8.0). Normally 5% – 8% trehalose is added as protectants before lyophilization.

Storage & Shipping: Store at -20°C to -80°C for 12 months in lyophilized form. After reconstitution, if not intended for use within a month, aliquot and store at -80°C (Avoid repeated freezing and thawing). Lyophilized proteins are shipped at ambient temperature.

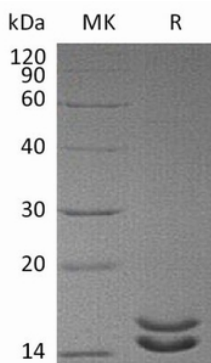


Figure 1. Greater than 95% as determined by reducing SDS-PAGE.

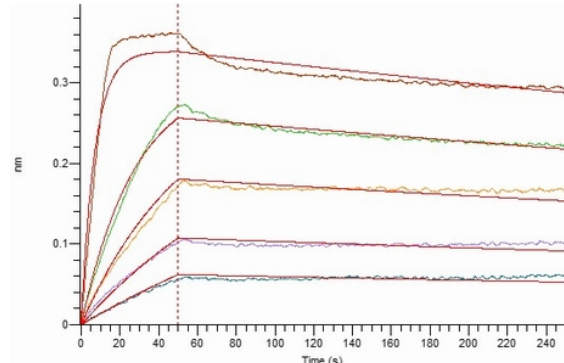


Figure 2. Loaded Human IL-2RA-Fc on Protein A Biosensor, can bind Human IL-2 Superkine with an affinity constant of 0.58 nM as determined in BLI assay.

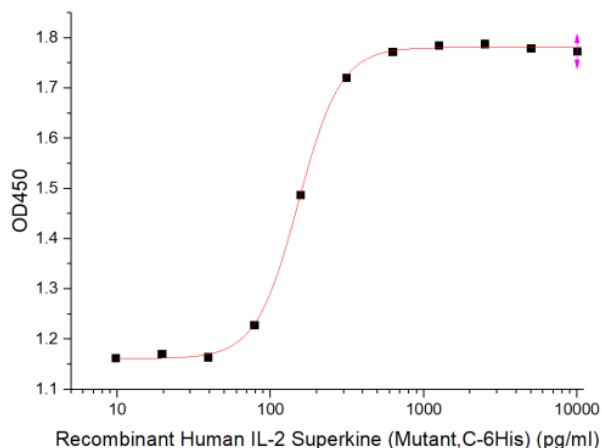


Figure 3. Measured in a cell proliferation assay using CTLA-4 mouse cytotoxic T cells. The ED50 for this effect is 151.39 pg/ml

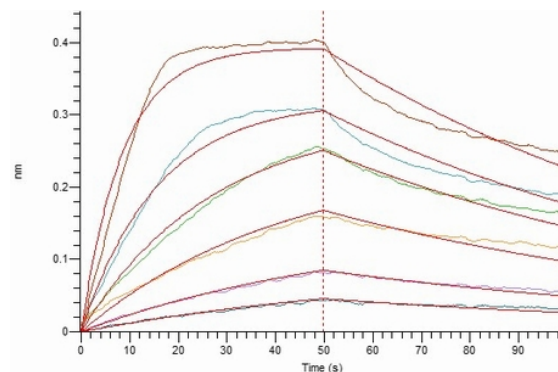


Figure 4. Loaded Human IL-2RA-Fc on Protein A Biosensor, can bind Human IL-2 Superkine with an affinity constant of 10.4 nM as determined in BLI assay.



Product Description

Pioneering GTPase and Oncogene Product Development since 2010
